

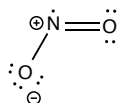
## Practice Problems on Lewis Structures - Answers

1. Draw good Lewis structures for each of the following:

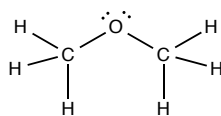
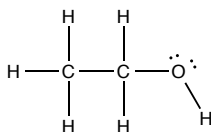
CO



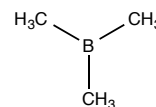
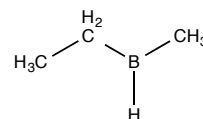
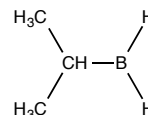
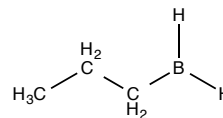
NO<sub>2</sub>



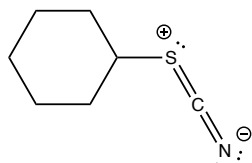
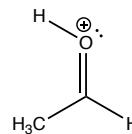
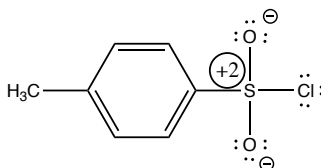
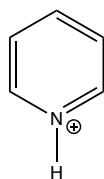
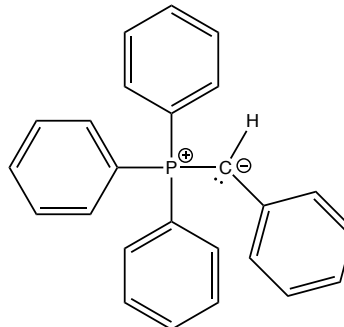
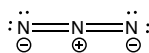
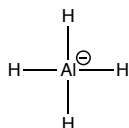
C<sub>2</sub>H<sub>6</sub>O (2 isomers)



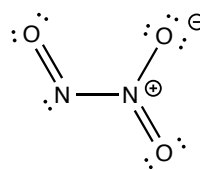
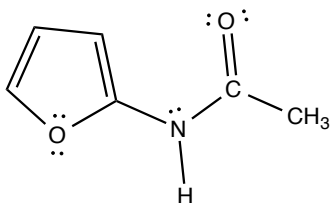
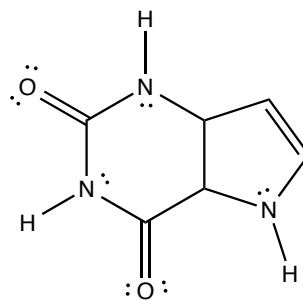
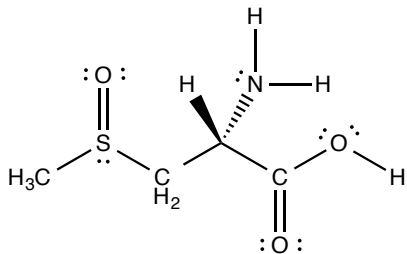
BC<sub>3</sub>H<sub>9</sub> (4 isomers)



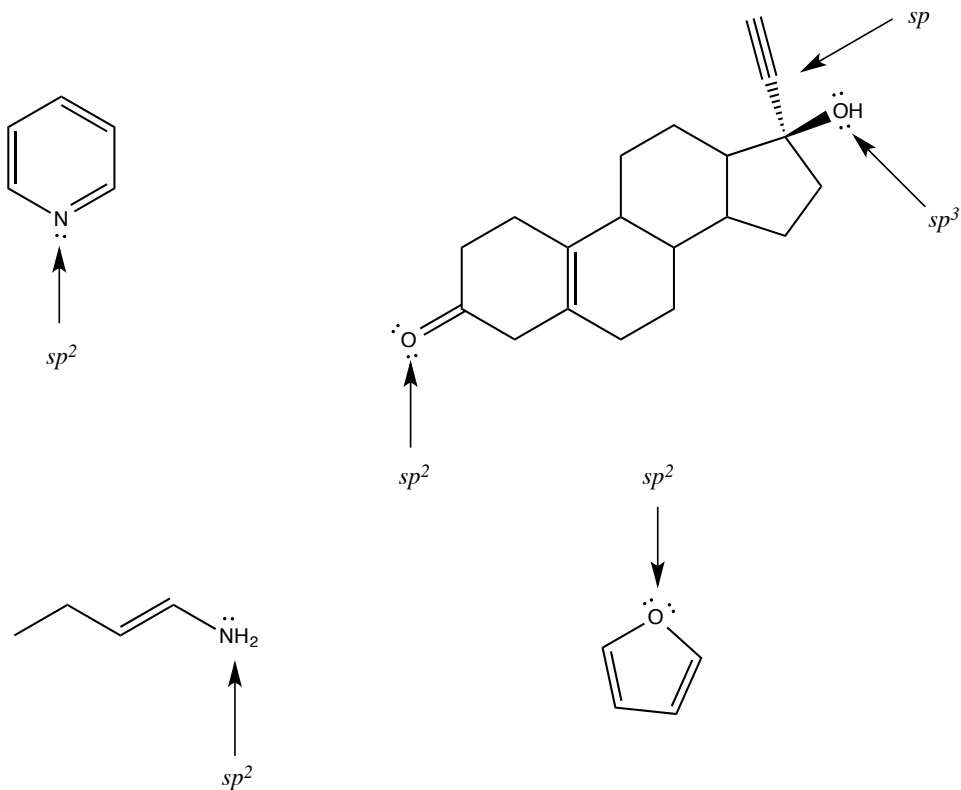
2. For each of the following determine the formal charges.



3. Draw lone pairs of electron where needed.



4. Write the approximate hybridization of the atoms with an arrow.



Prepared by José Laboy