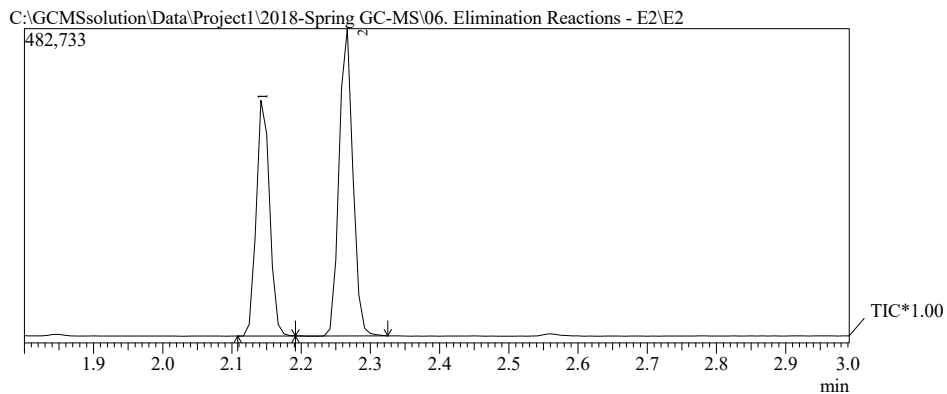


### Sample Information

E2 2 C:\GCMSsolution\Data\Project1\2018-Spring GC-MS\06. Elimination Reactions - E2\Elimination High Split\_new

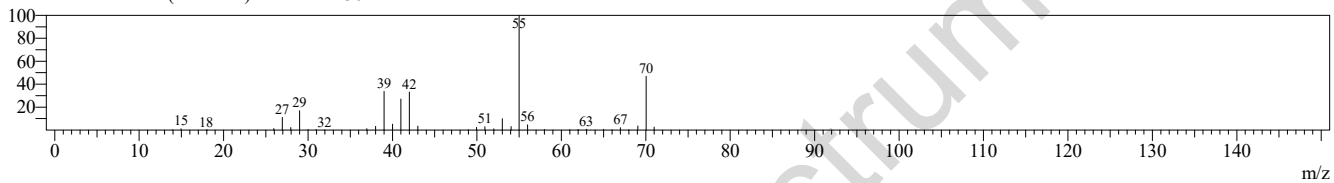
Peak Report TIC

Peak#	R.Time	Area	Area%
1	2.144	483979	42.56
2	2.265	653320	57.44
		1137299	100.00



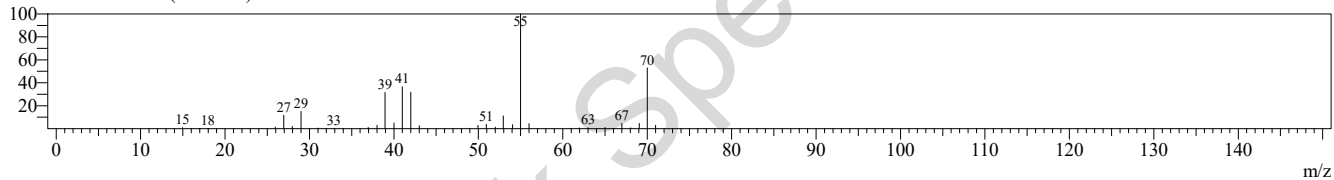
Spectrum

Peak#:1 R.Time:2.1(Scan#:42) MassPeaks:36



Spectrum

Peak#:2 R.Time:2.3(Scan#:57) MassPeaks:36



Stock Spectrum