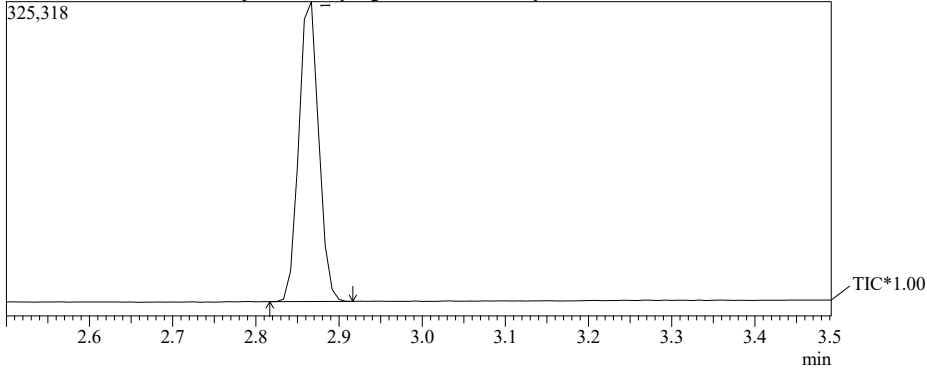


Sample Information

SN1 C:\GCMSsolution\Data\Project1\2018-Spring GC-MS\05. Nucleophilic Substitution Reactions - SN1\SN1.qgm C:\G

SN1 C:\GCMSsolution\Data\Project1\2018-Spring GC-MS\05. Nucleophilic Substitution Reactions - SN1\SN1

Peak#	R.Time	Area	Area%
1	2.864	515304	100.00
		515304	100.00



Spectrum

Peak#:1 R.Time:2.9(Scan#:45) MassPeaks:46

