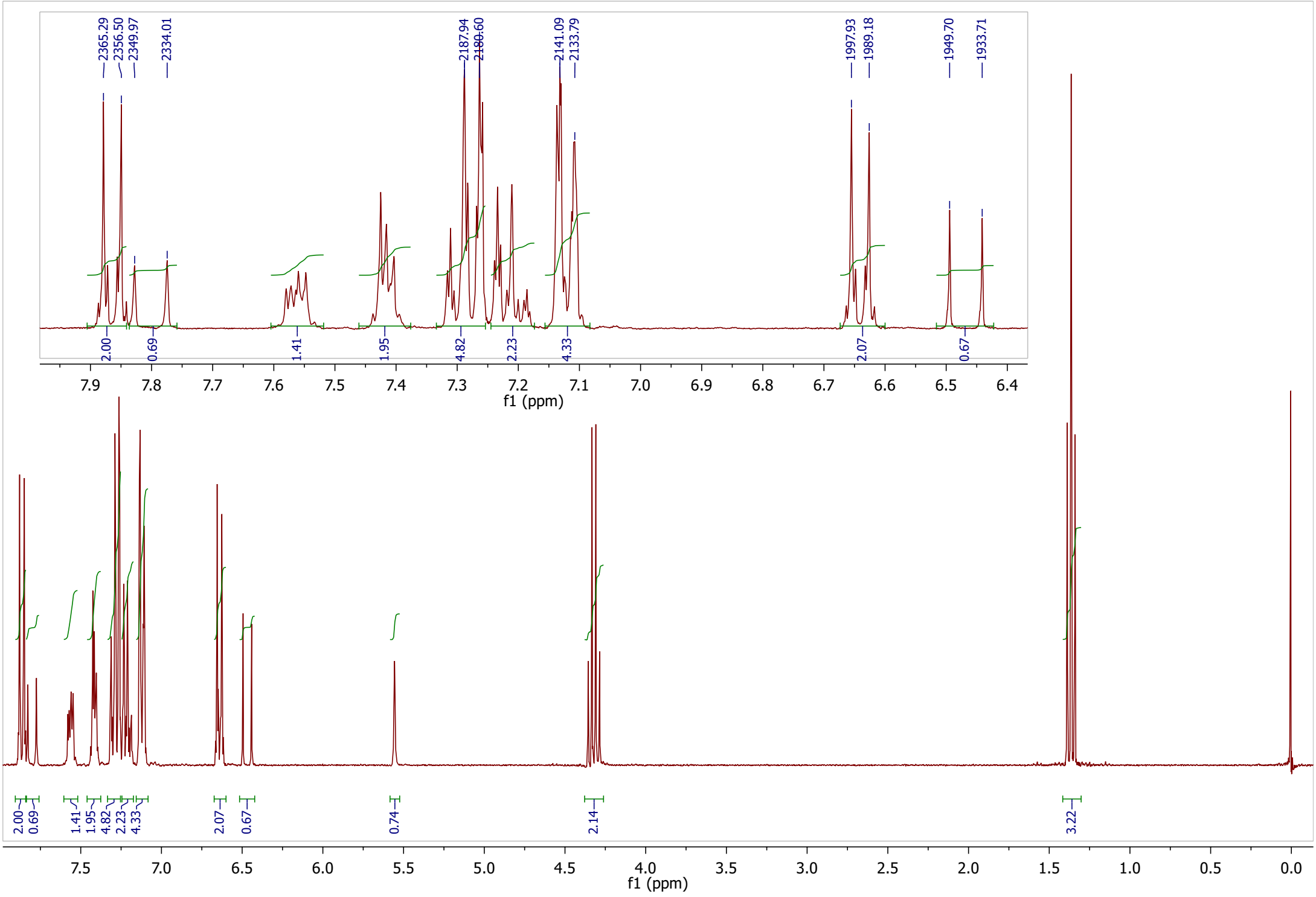
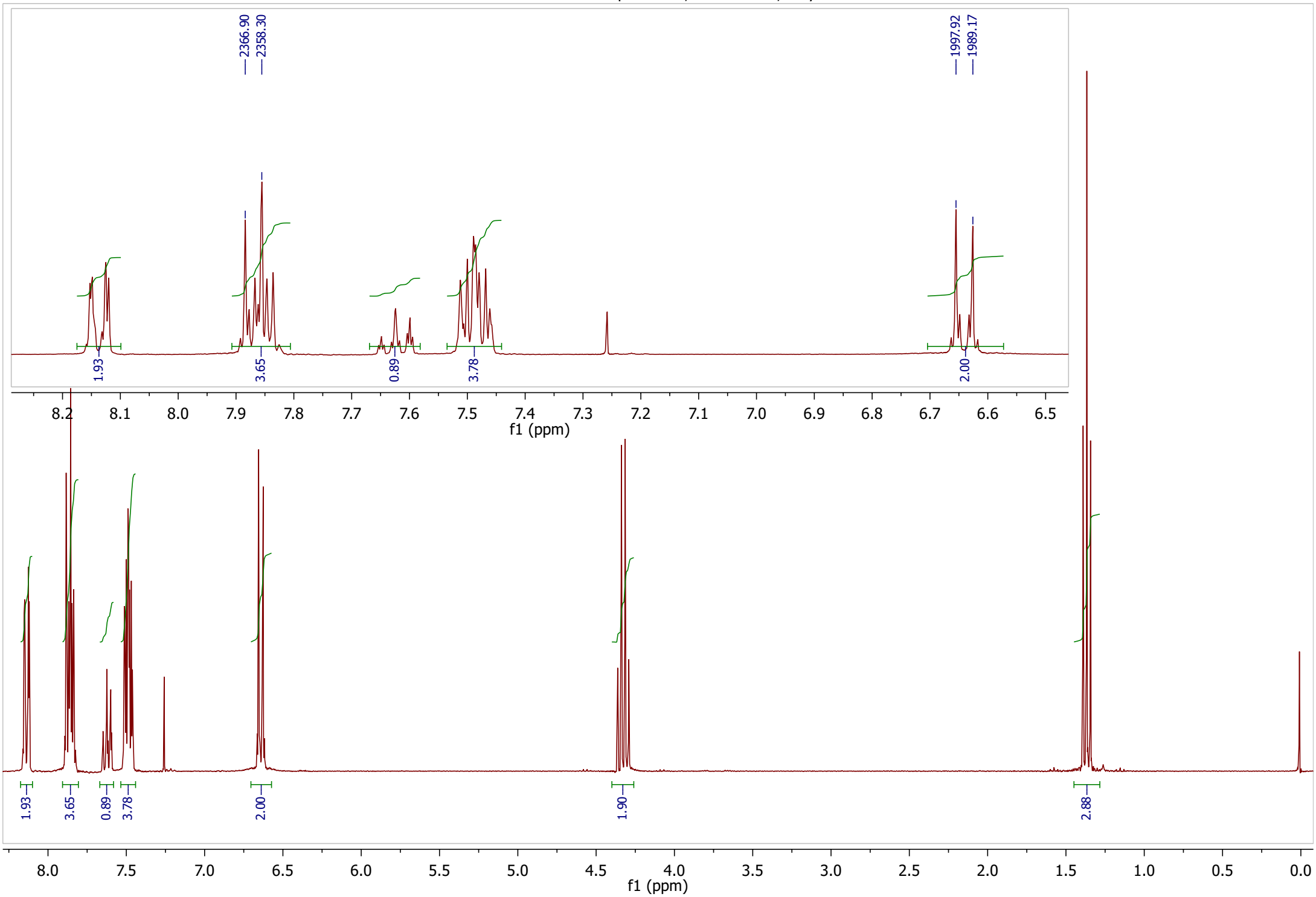


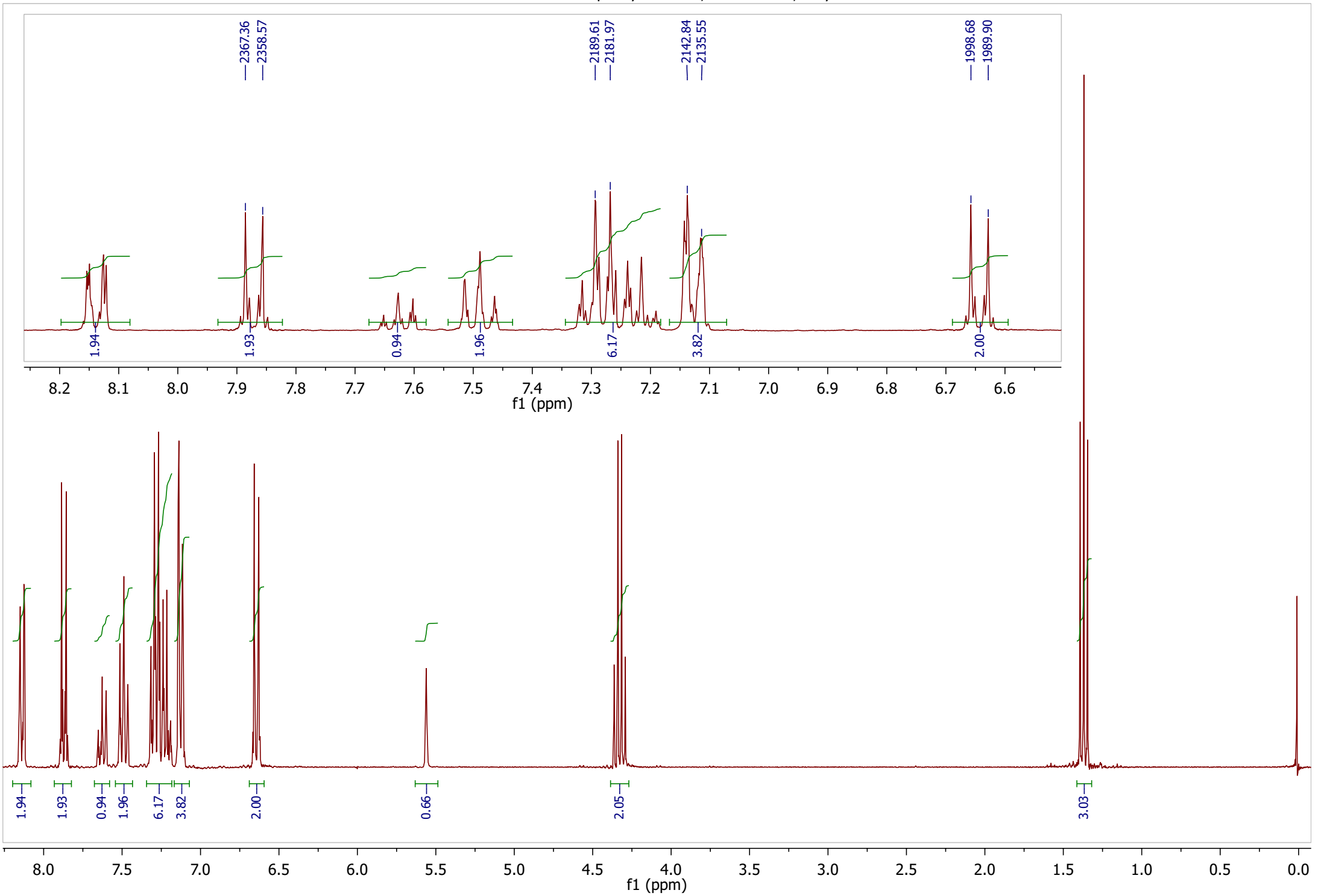
CHEM 344 Extraction Mixture A - triphenylmethane, trans-cinnamic acid, ethyl 4-aminobenzoate



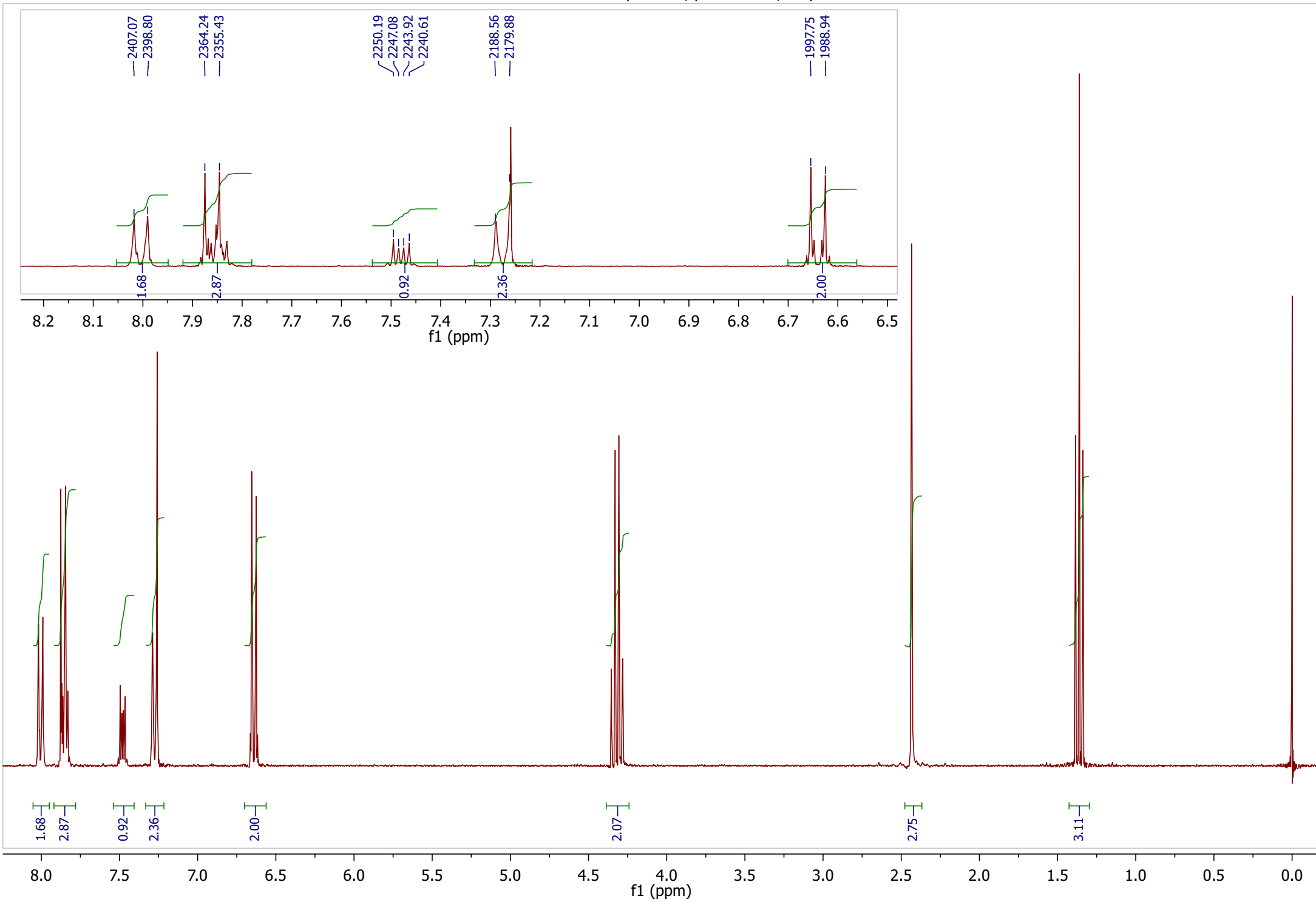
CHEM 344 Extraction Mixture B - naphthalene, benzoic acid, ethyl 4-aminobenzoate



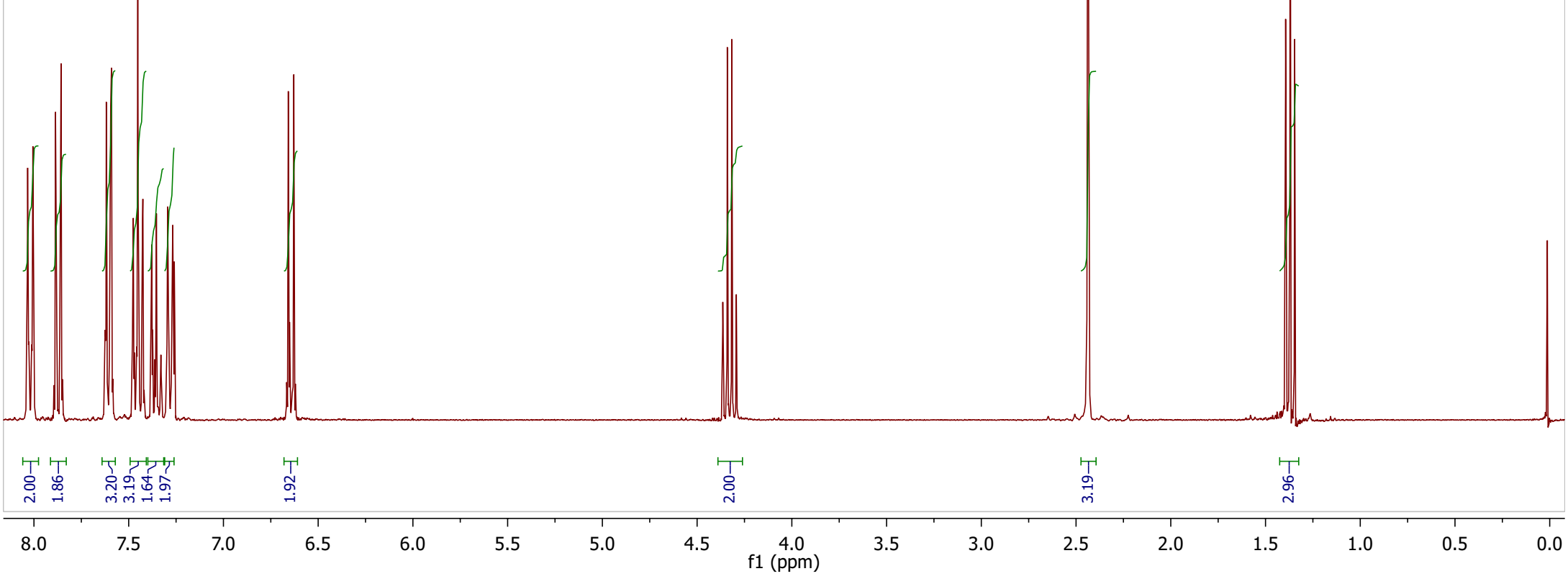
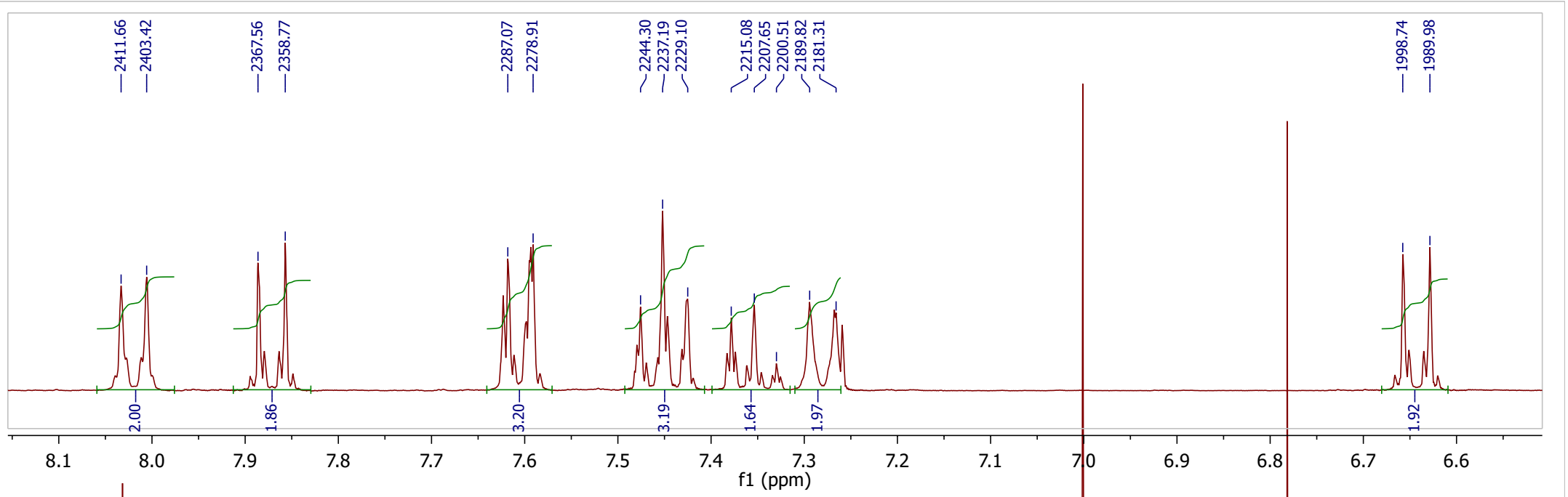
CHEM 344 Extraction Mixture C - triphenylmethane, benzoic acid, ethyl 4-aminobenzoate



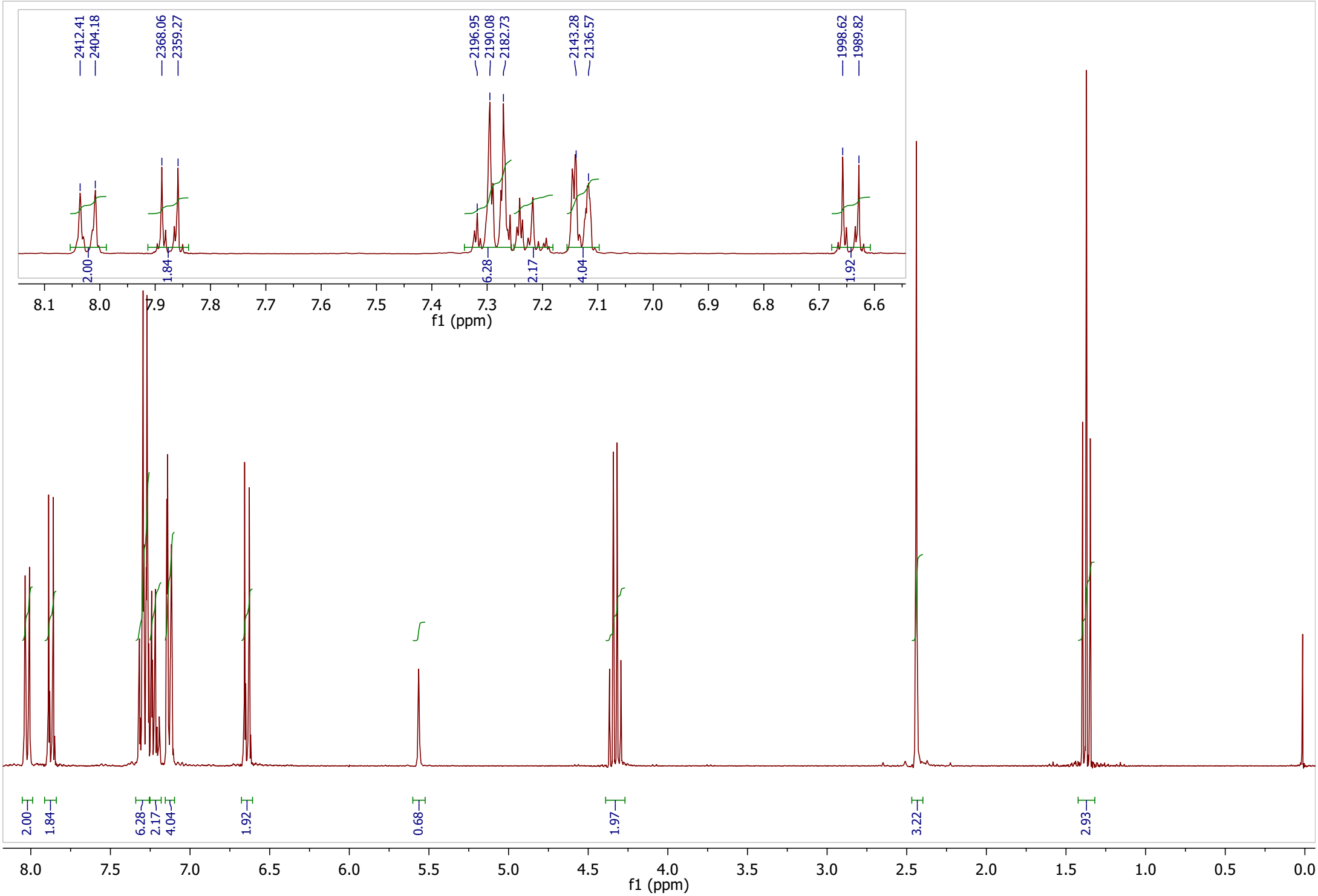
CHEM 344 Extraction Mixture D - naphthalene, p-toluic acid, ethyl 4-aminobenzoate



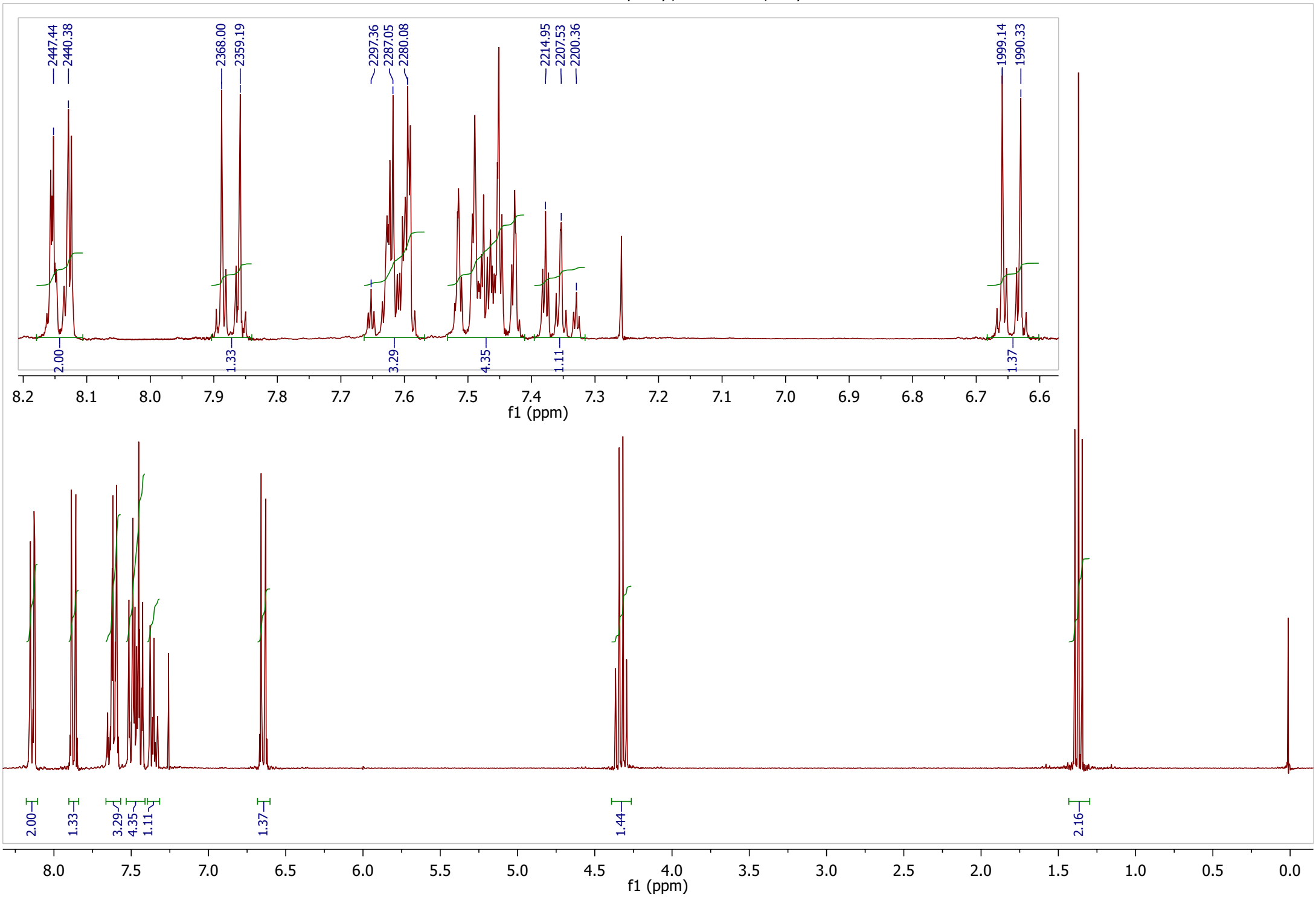
CHEM 344 Extraction Mixture E - biphenyl, p-toluic acid, ethyl 4-aminobenzoate



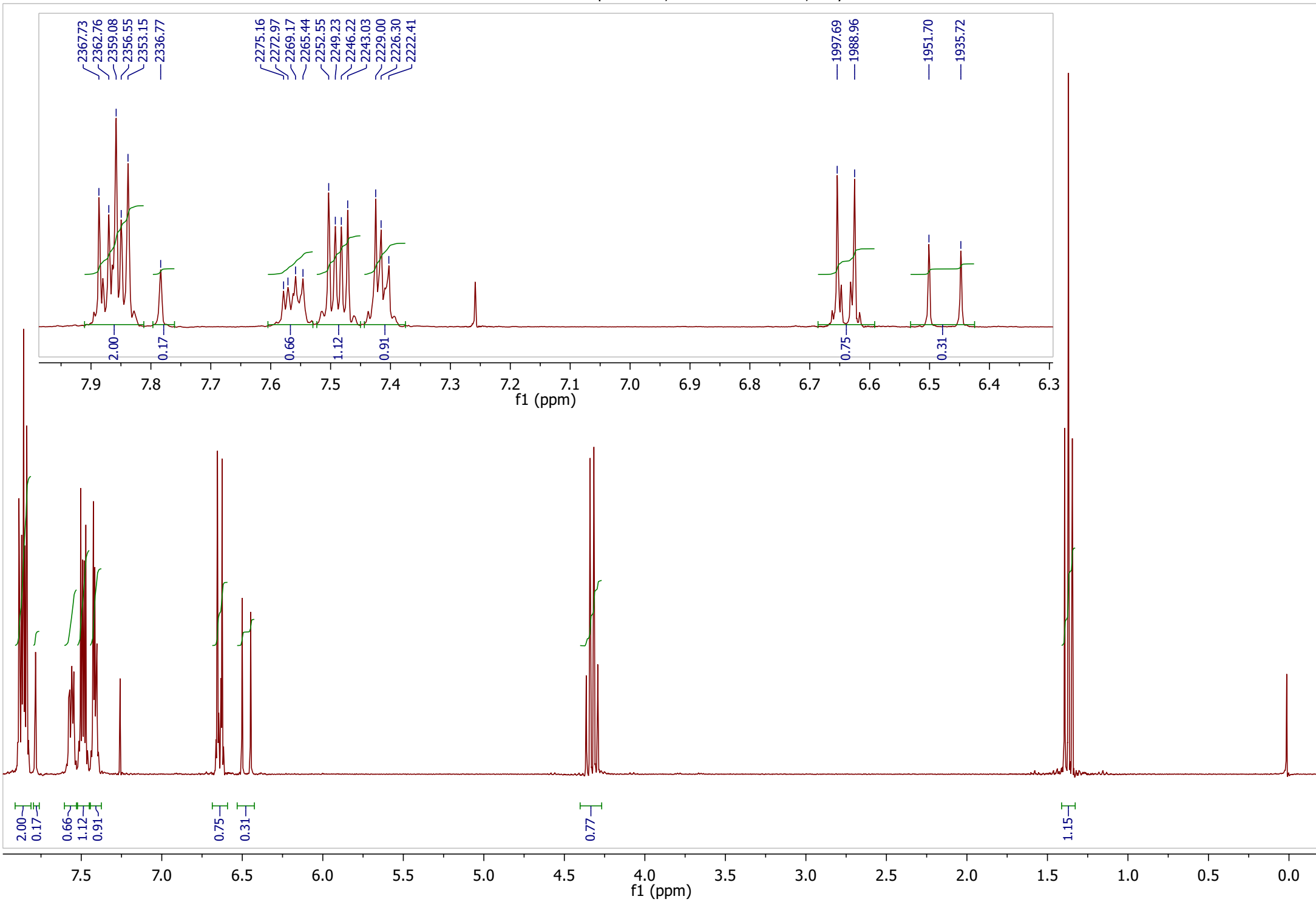
CHEM 344 Extraction Mixture F - triphenylmethane, p-toluic acid, ethyl 4-aminobenzoate



CHEM 344 Extraction Mixture G - biphenyl, benzoic acid, ethyl 4-aminobenzoate



CHEM 344 Extraction Mixture H - naphthalene, trans-cinnamic acid, ethyl 4-aminobenzoate





CHEM 344 Extraction Mixture I - biphenyl, trans-cinnamic acid, ethyl 4-aminobenzoate

