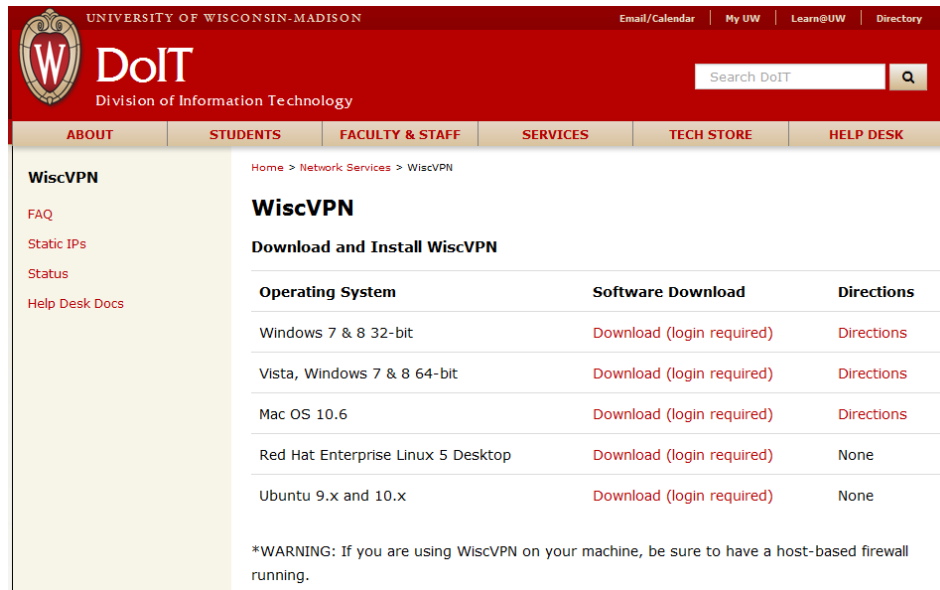


Downloading and Installing WiscVPN (Virtual Private Network) – PC Instructions

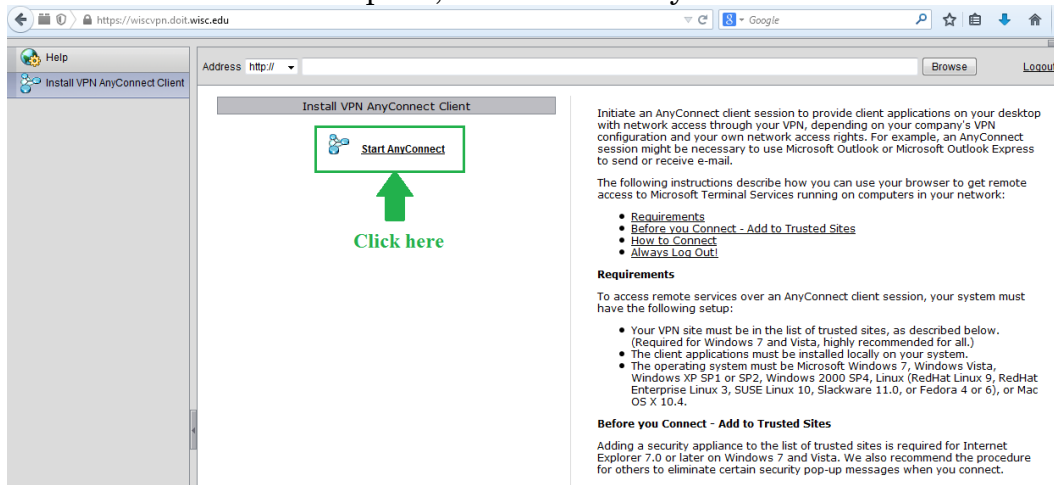
1. Go to <https://www.doit.wisc.edu/network/vpn/> and click the correct version for your computer.



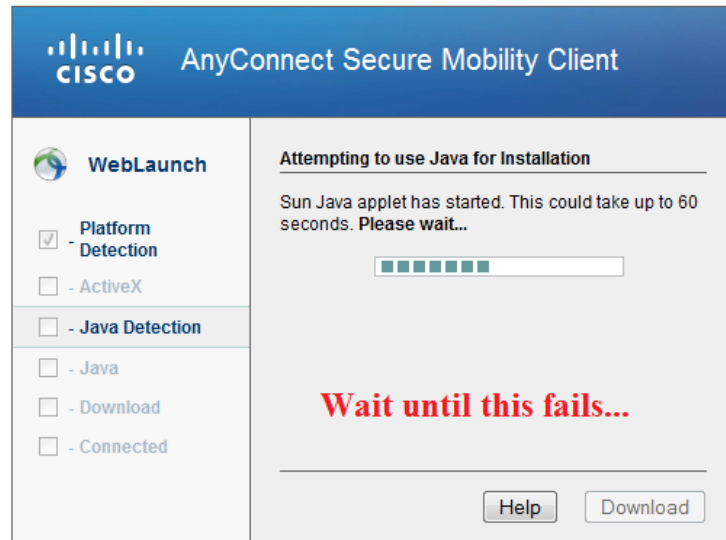
2. Select “IP-pool” for the GROUP and log in with your NetID and password (note that you should use NetID – the same login info as you use for wisemail – and NOT your chemistry login at this point)



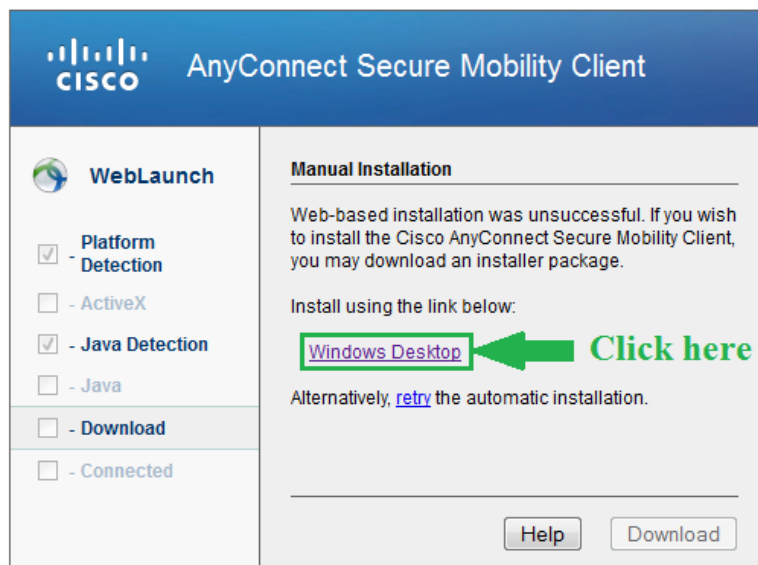
3. In the new screen that opens, click “Start AnyConnect”



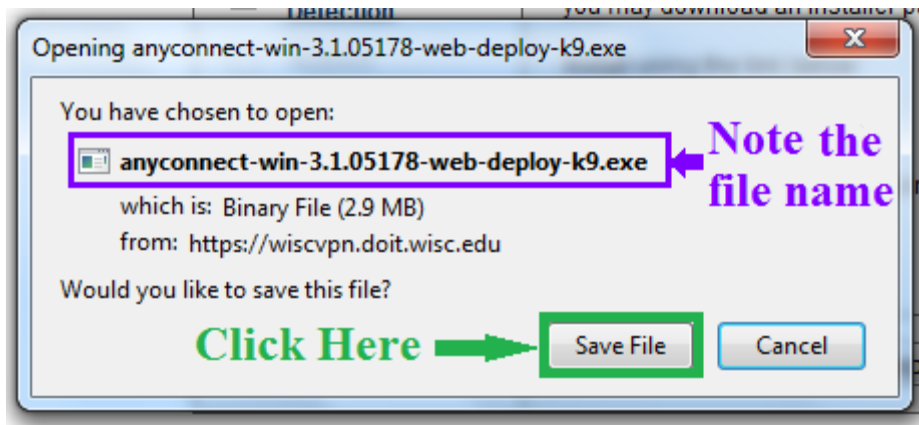
4. It will attempt to download through Java and you will see the following loading screen for approximately 1 minute. However, IT WILL FAIL. **Wait until it fails and offers the option to download directly** (below).



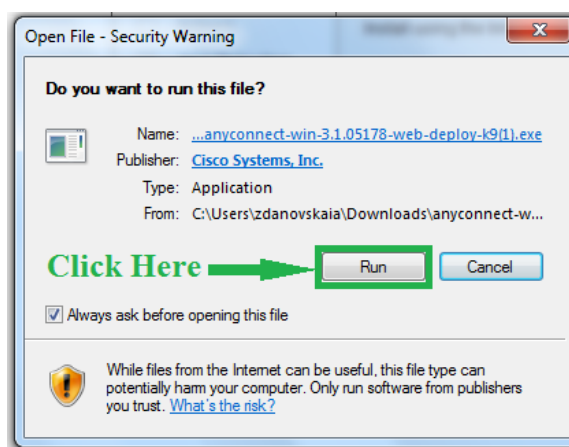
Once it fails, it will offer the option to download directly. Click “Windows Desktop” or the equivalent option for Mac.



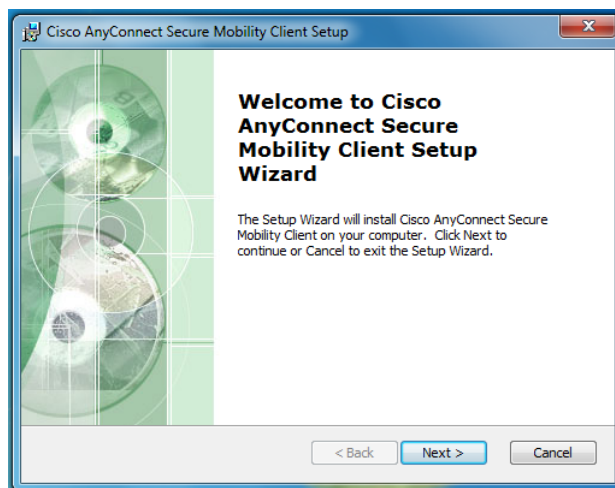
5. Note the file name and select “Save File” on the box that pops up (alternately, it might just show the download in the lower left-hand corner of your browser)



6. Go to your downloaded files and select the program using the name noted in the previous step or open the downloaded file from your browser. Click “Run”.

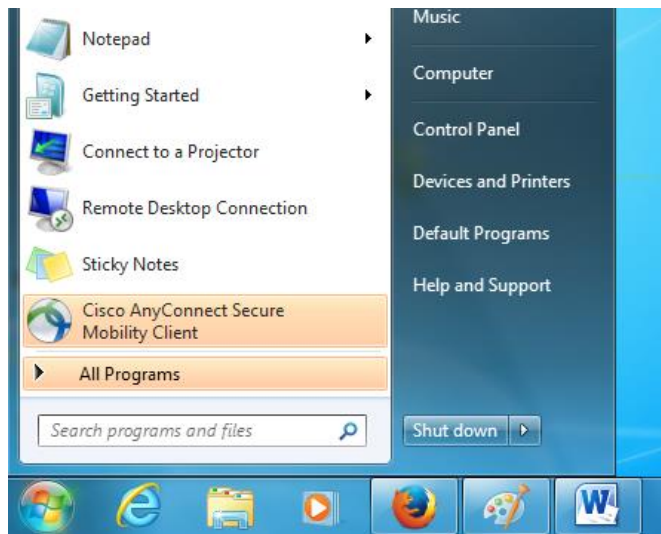


7. The installer will open. Click “Next”
 - Accept the License terms and continue
 - Click “Install”

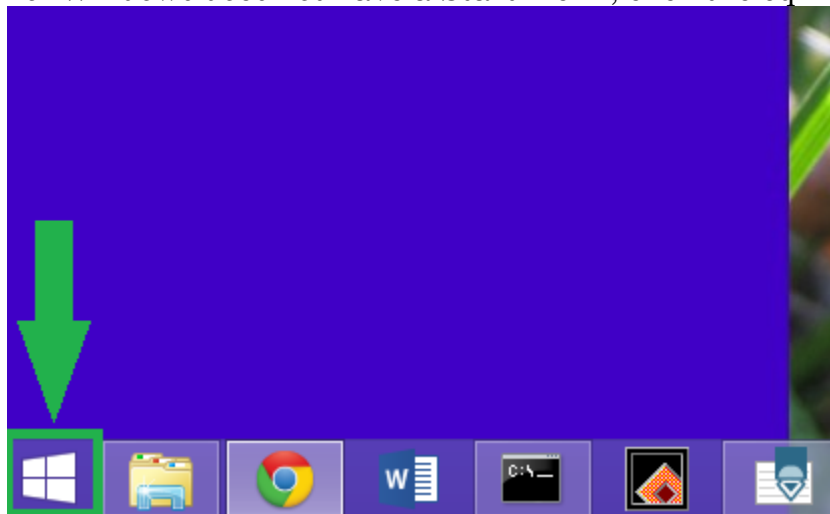


- Allow the program to make changes to your computer when the security windows pops up.
- Click “Finish” when the installer is finished.

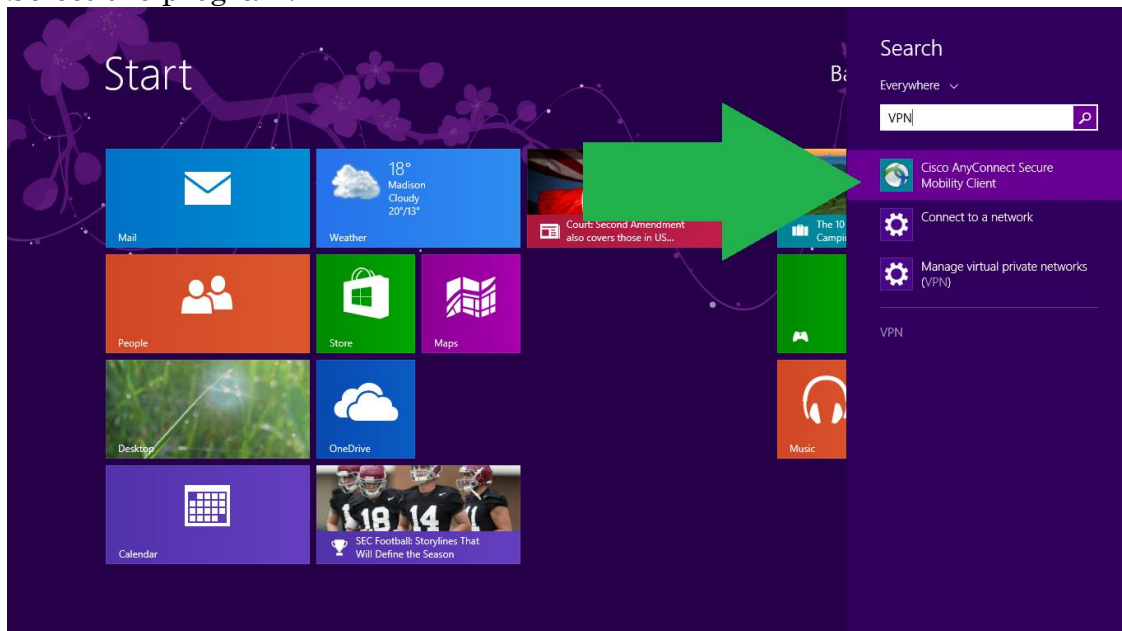
8. You may now use the program. You can find it in your programs, or it may automatically appear in the start menu:



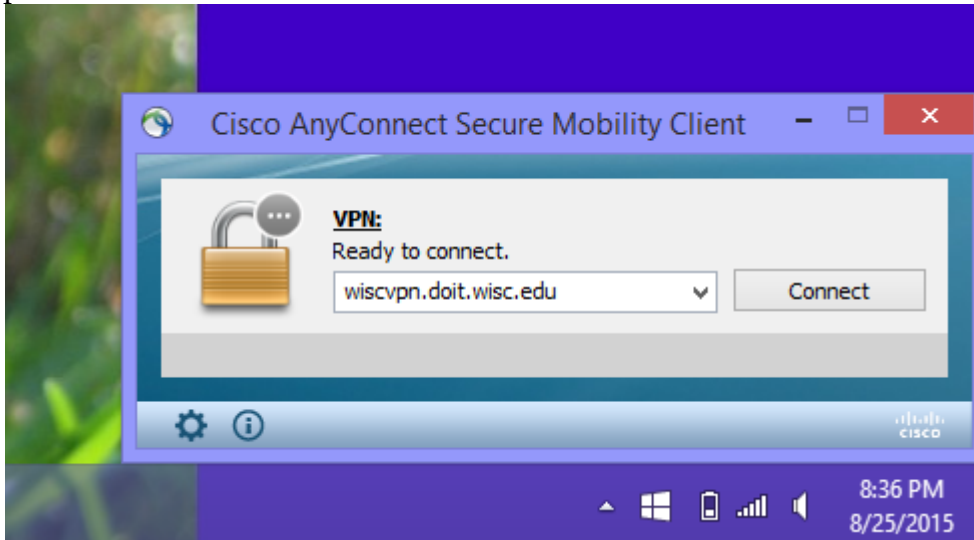
- If your version of Windows does not have a Start menu, click the equivalent button



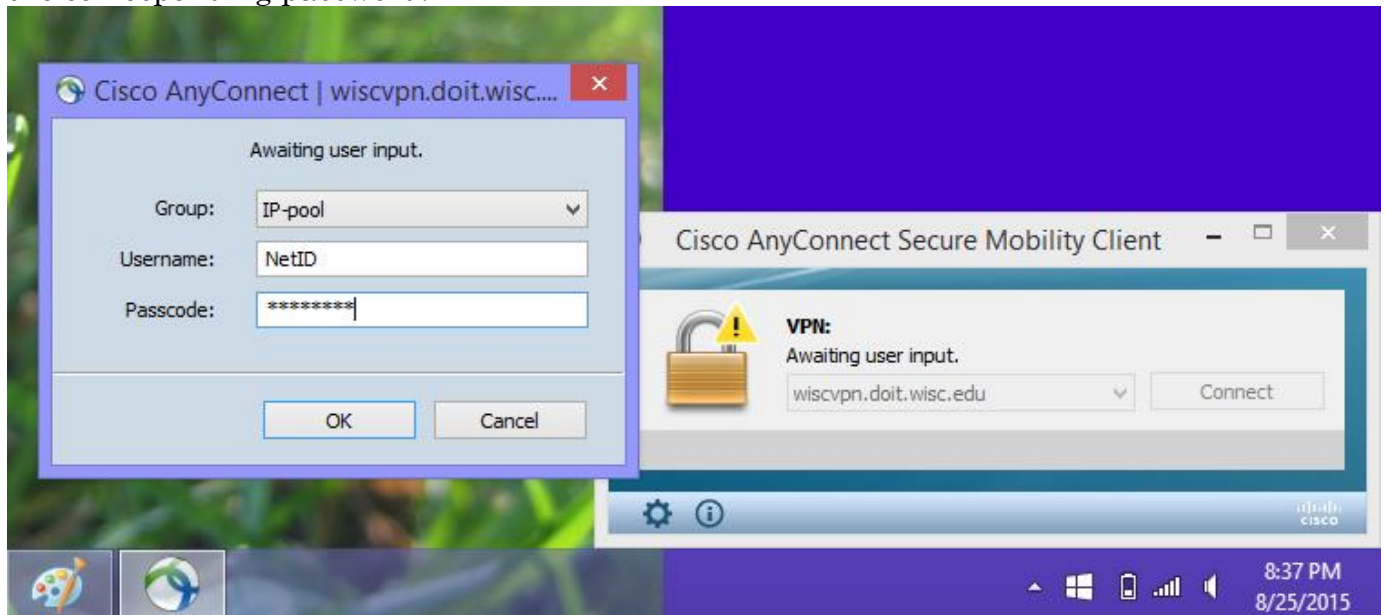
- Type "VPN". The program will appear on the right-hand side of your start menu. Select the program.



9. The client will appear in the bottom, right-hand corner of your screen. Type “wiscvpn.doit.wisc.edu” in the box and click “Connect”.



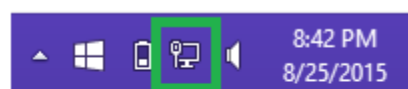
10. You will be prompted for your login information. Again, use your Wisconsin NetID and the corresponding password.



11. Wait for it to connect. This may take some time. If you are connected wirelessly, you will know it has connected because your usual “bar” internet connection symbol will change to a computer with a cable icon.



**Not connected
to VPN**



**Connected
to VPN**