

CHEM 344 Wittig Synthesis of Ethyl Cinnamate

Name:

Lab Partner:

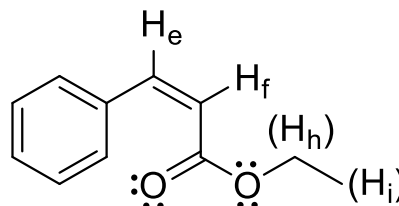
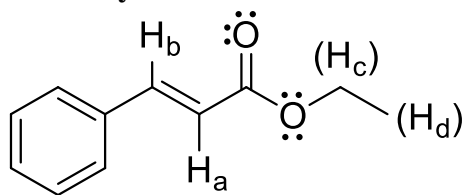
TA:

Weight of crude product _____

% yield of crude product (show calculation below) _____

Major isomer (draw structure, state stereochemistry and relevant J values)

NMR key



Label the aromatic proton signal(s) as "Ph" (you do not need to assign individual protons)

Ratio major:minor isomers (show calculation below) _____

trans isomer WebMO job numbers: _____ (opt+vib) _____ (NMR)

cis isomer WebMO job numbers: _____ (opt+vib) _____ (NMR)

CHEM 344 Wittig synthesis of Ethyl Cinnamate

Name:

Lab Partner:

TA:

Prelab

Title

Chemical reaction

Answers to pre-lab question(s)

Reagent table

Concise outline of procedure

Total ____/7

Report

Observations

____/3

Report Total ____/10

Results

Post-lab question 1

____/4

Post-lab question 2

____/4

Post-lab question 3

____/10

Post-lab question 4

____/9

Post-lab question 5

____/2

¹H-NMR assignments

____/5

Correct identification of major isomer

____/1

Results Total ____/35

Final Total ____/45