

How to stop an ICON NMR queue on Eos

27 May 2021 (hh)

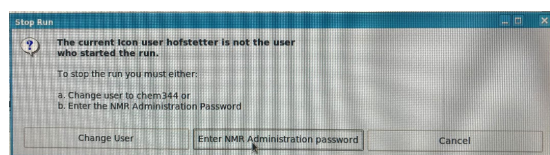
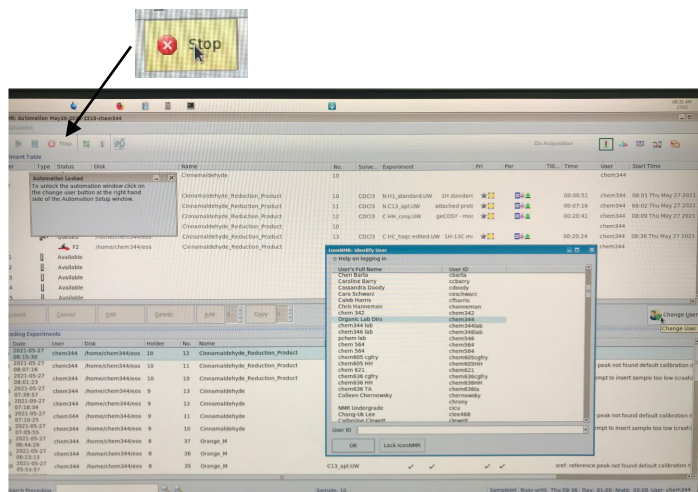
Brief Summary

Please start your own queue in your account on Eos. For instructions on how to set up ICON NMR in individual topspin accounts see https://www2.chem.wisc.edu/~cic/nmr/Guides/Ba3vug/AV3_stop-start-IconNMR.pdf.

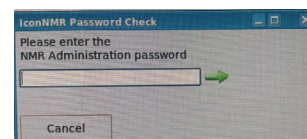
Should there be a running queue from a different user where all samples have finished and where the user has signed out if ICON, feel free to stop this queue, log out the user and start another queue in your account. Make sure that you are signed up for time on the calendar – do NOT interfere with runs from other users. A quick email to ensure that you can use the instrument is always a good idea if you are unsure.

A. Initial Setup:

1. When you walk up to the instrument you will see the logon window.
2. Login with your username and password.
3. Hit the **stop** button in the upper part left part of the menu bar.
4. If a different user started the queue, it will not automatically stop but the following window will appear.



5. Click on the “Enter NMR Administration password” option.



6. A second window will appear. Please enter the password → you can find it taped to the bottom of the screen right in front of you.
7. Close Topspin and log out of the user account.
8. Log into your own account, start topspin and setup ICON NMR.