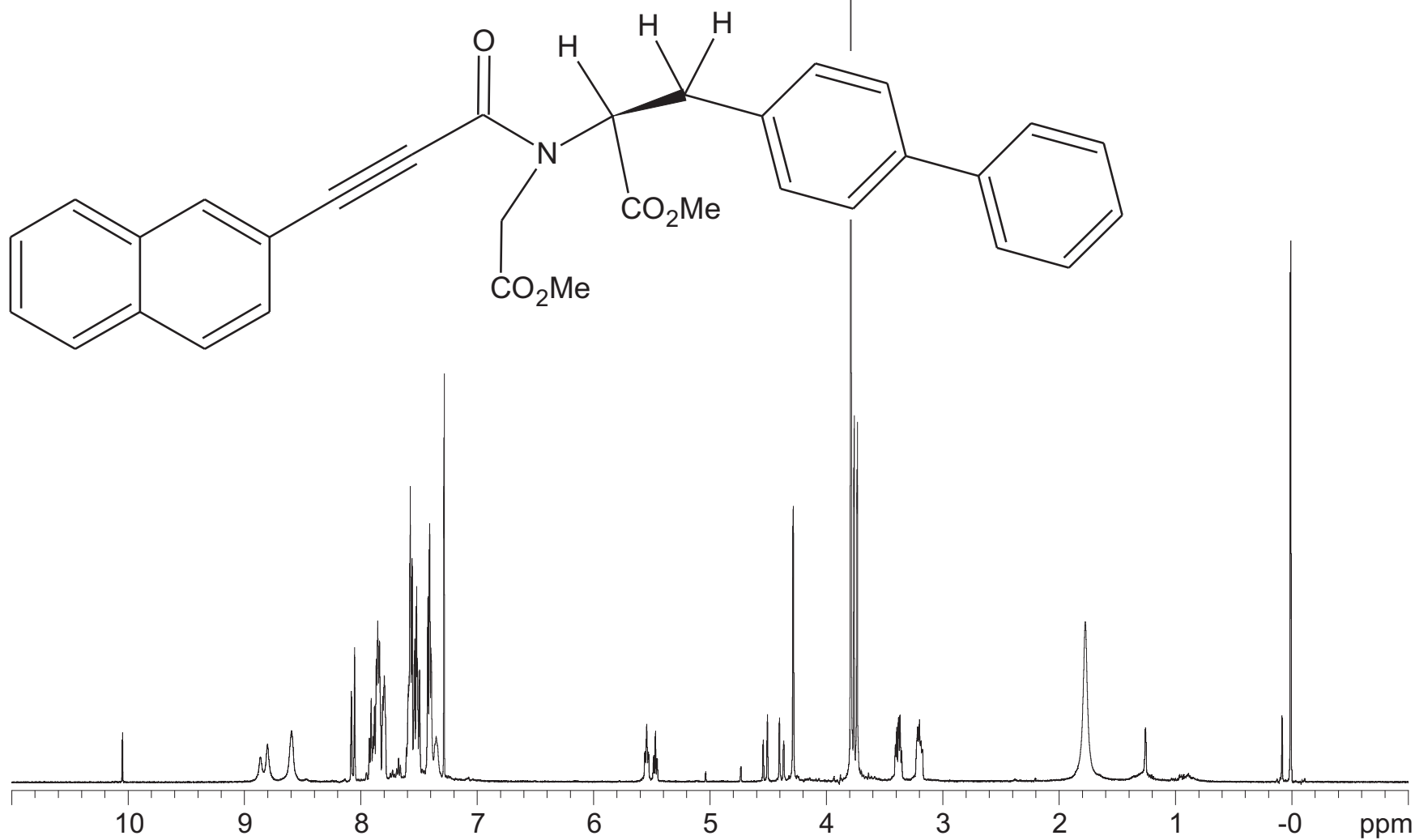


3-spin TOCSY1D Transfer Example

UNITY-500 data

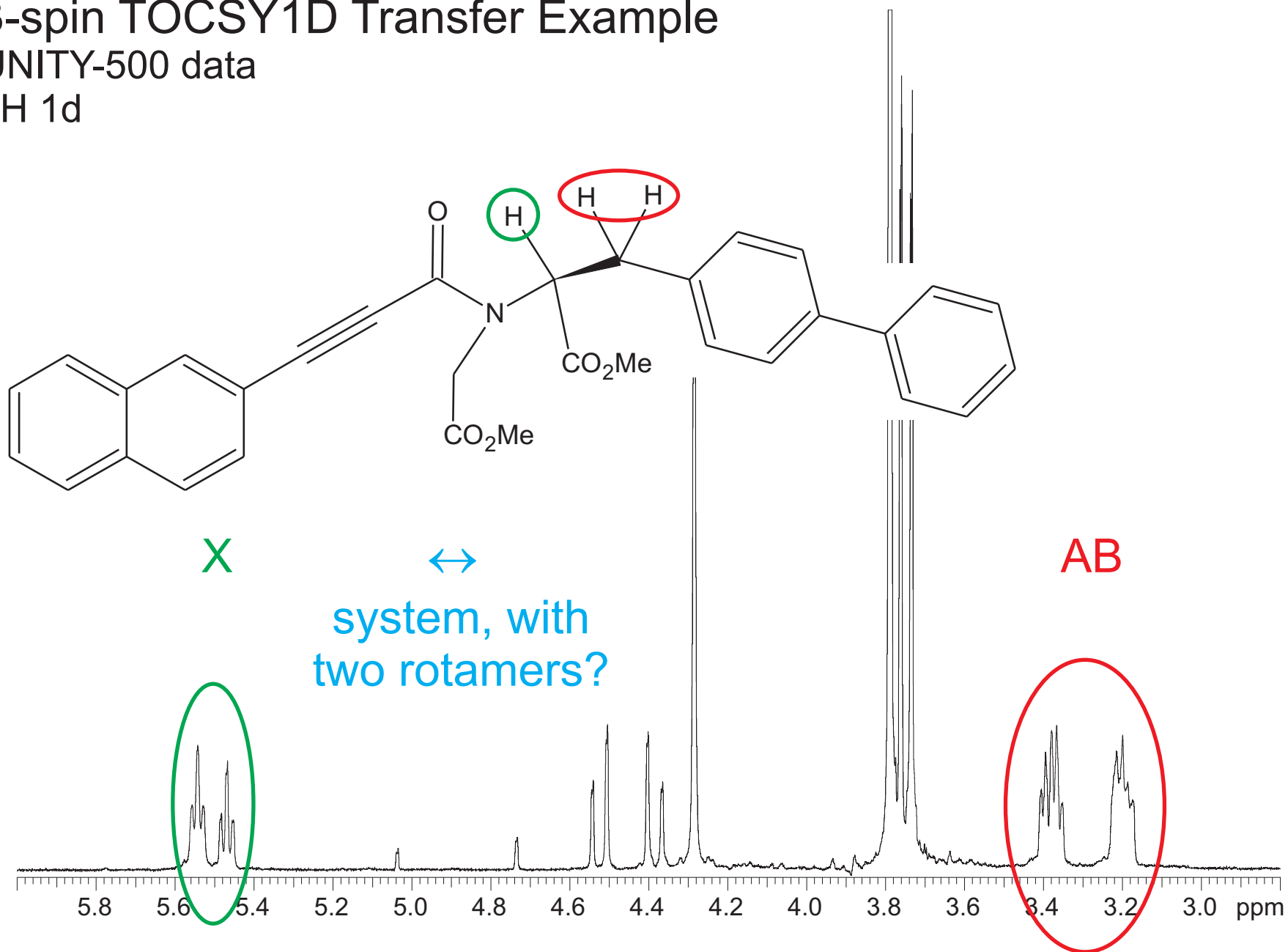
Sonya McKay - 1H 1d

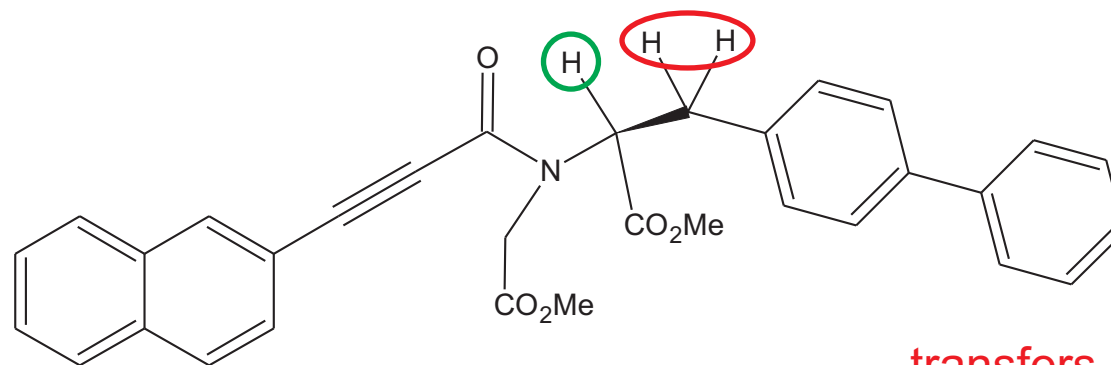


3-spin TOCSY1D Transfer Example

UNITY-500 data

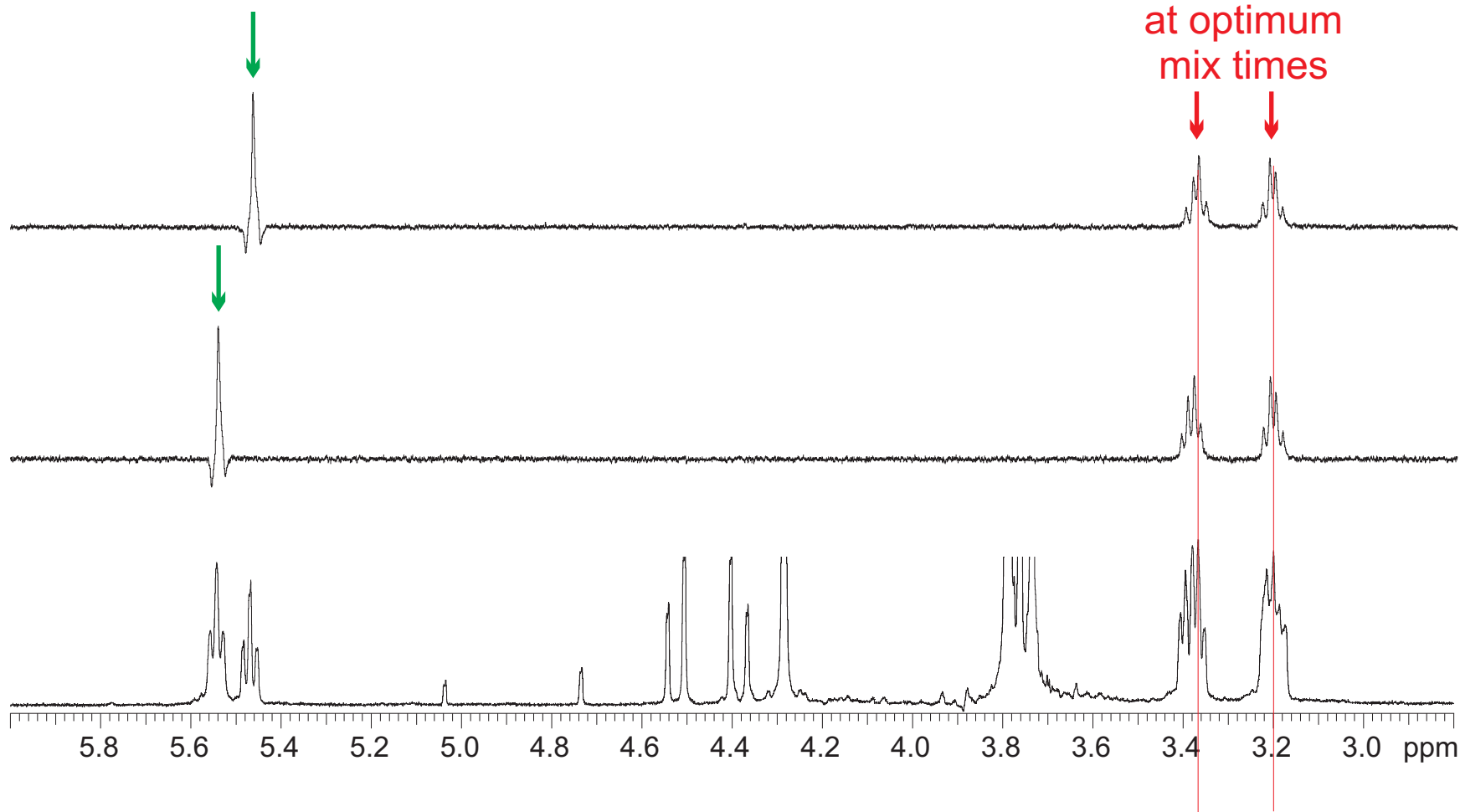
^1H 1d

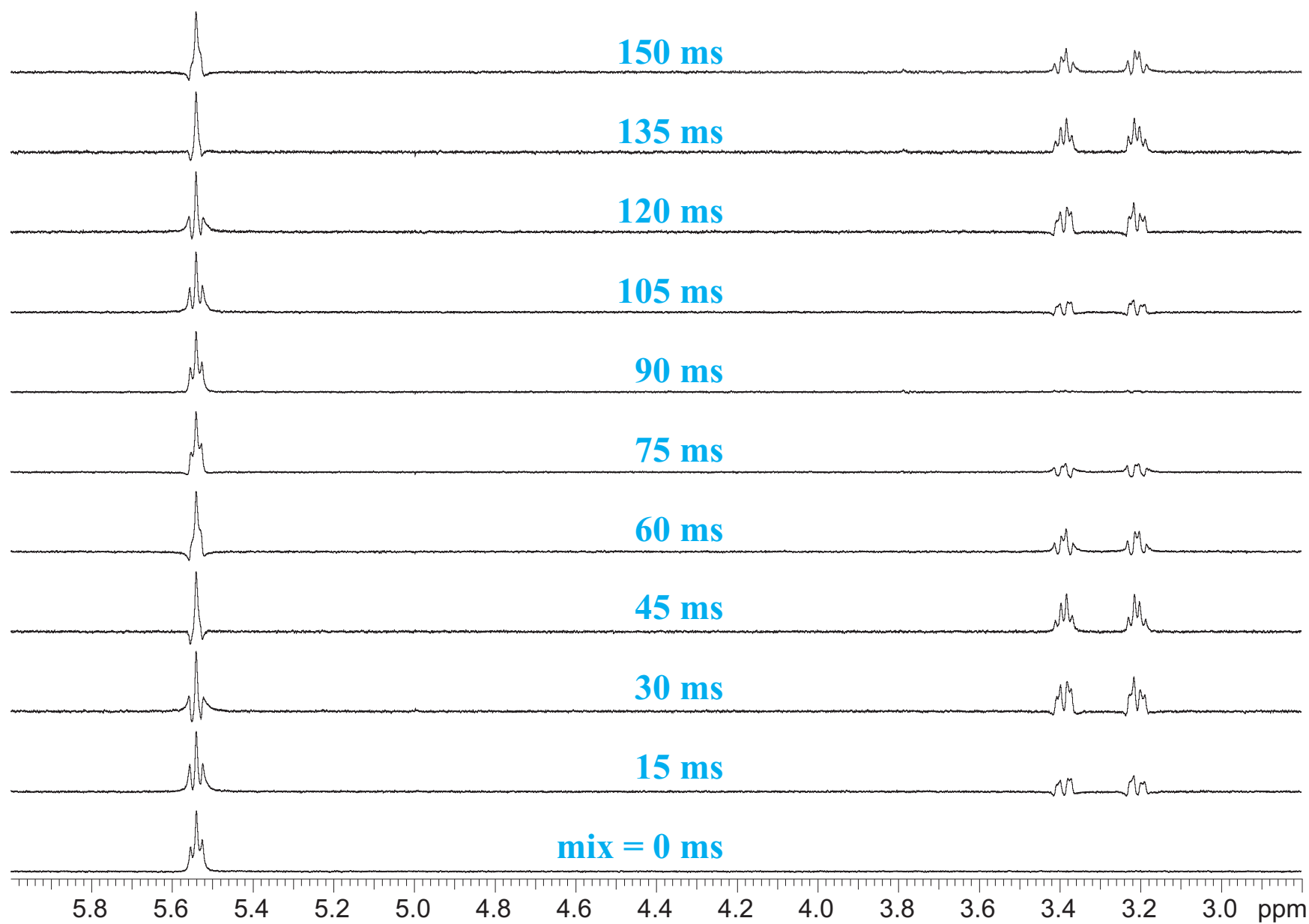




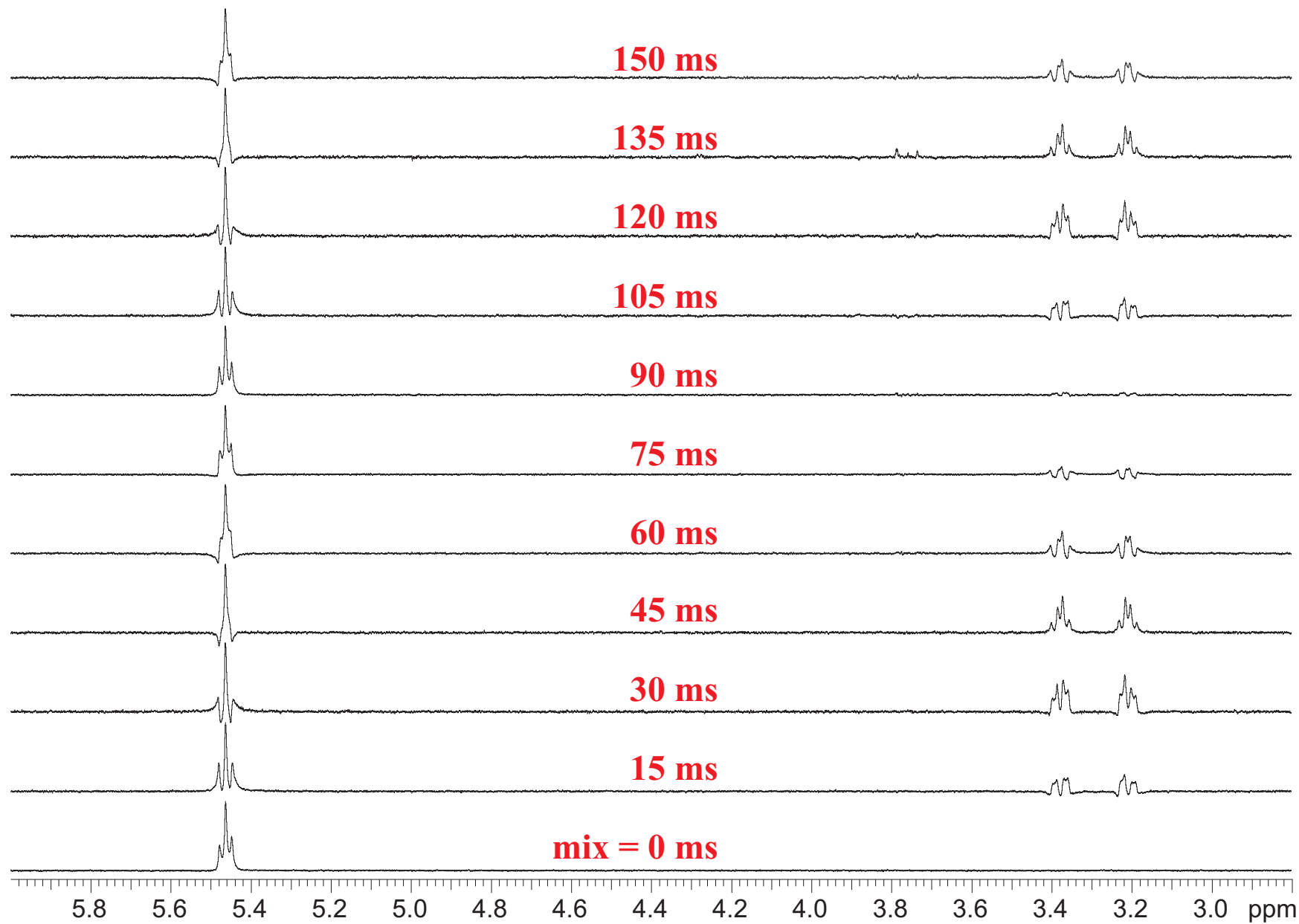
TOCSY1D
selections

transfers
at optimum
mix times









Transfer to-and-back at ~ 90 ms at $\sim 1/2J$ ($J \sim 6$ Hz)



Practical Aspects (cont.)

-  Because TOCSY peaks oscillate in magnitude, do not trust the absence of a peak from a single experiment with one mix time as strong evidence for lack of coupling.
-  TOCSY should be run with at least 2 mix times.
-  Do not use mix times that are exact multiples of each other.
-  The diagonal in 2D-TOCSY, and the starting multiplet in 1D-TOCSY can disappear completely (is a function of mix time).