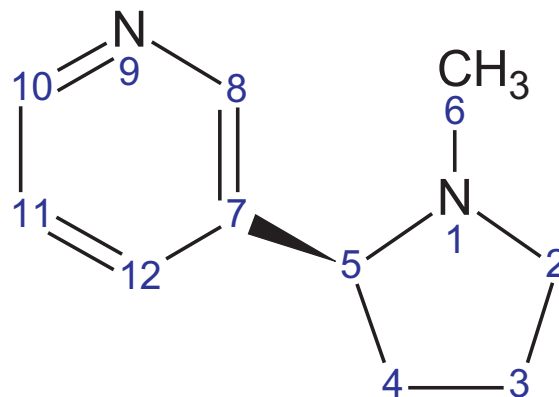
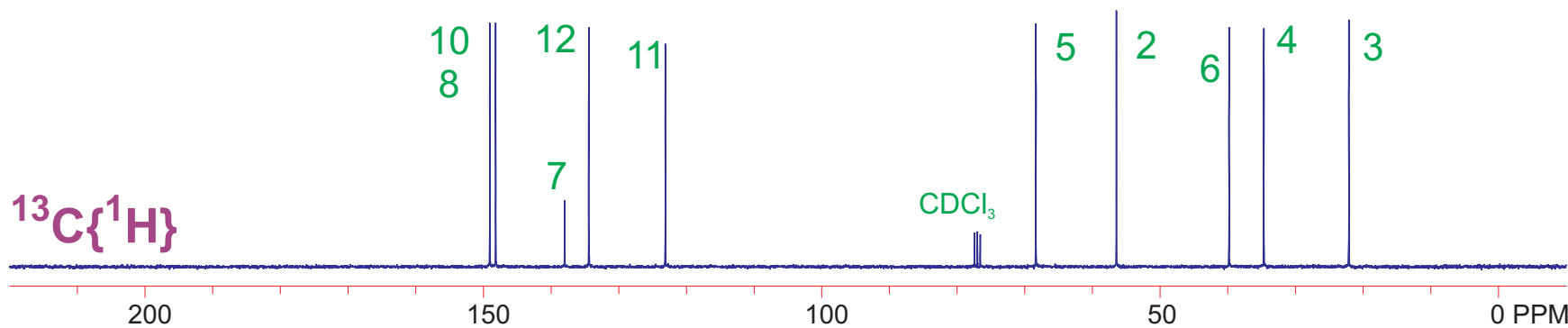
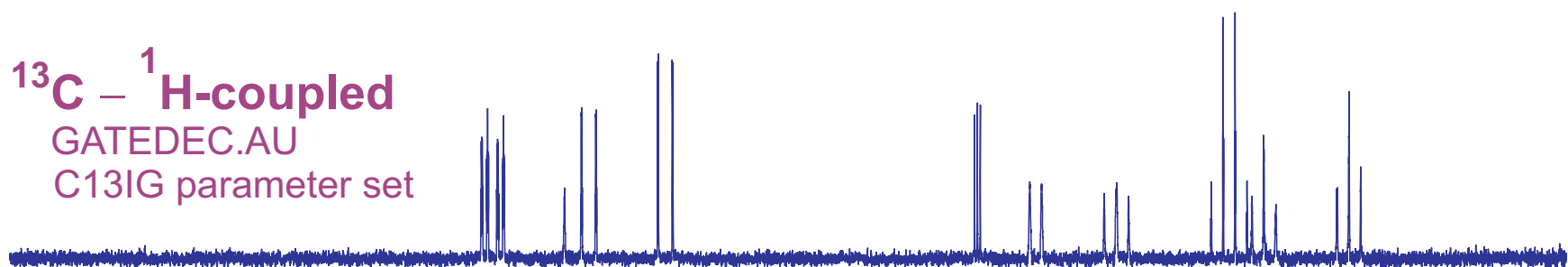


^{13}C spectra of nicotine in CDCl_3

Athena, NS=32
21 Oct 2008, cgf



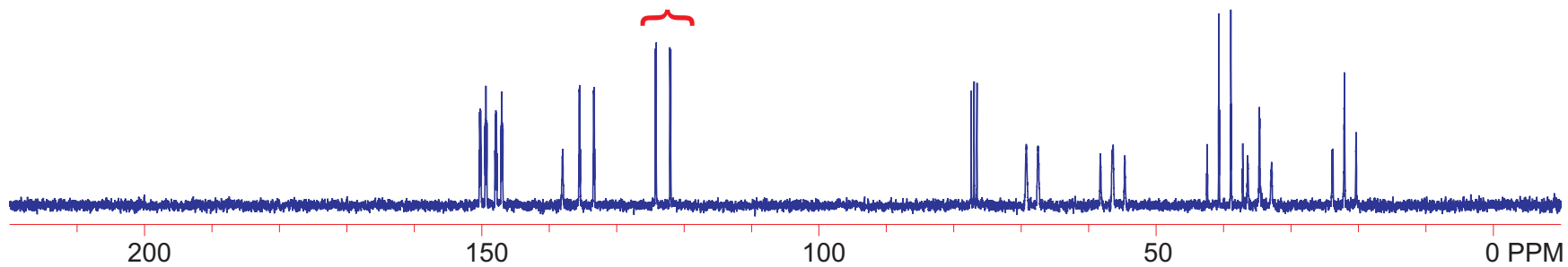
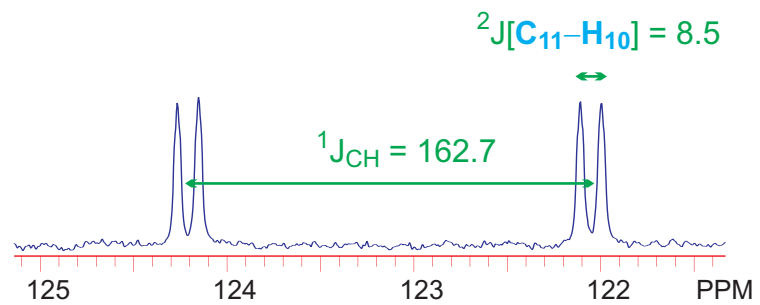
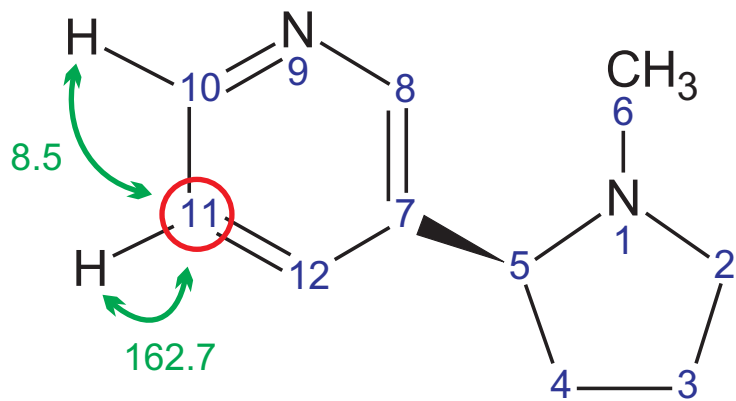
$^{13}\text{C} - ^1\text{H}$ -coupled
GATEDEC.AU
C13IG parameter set

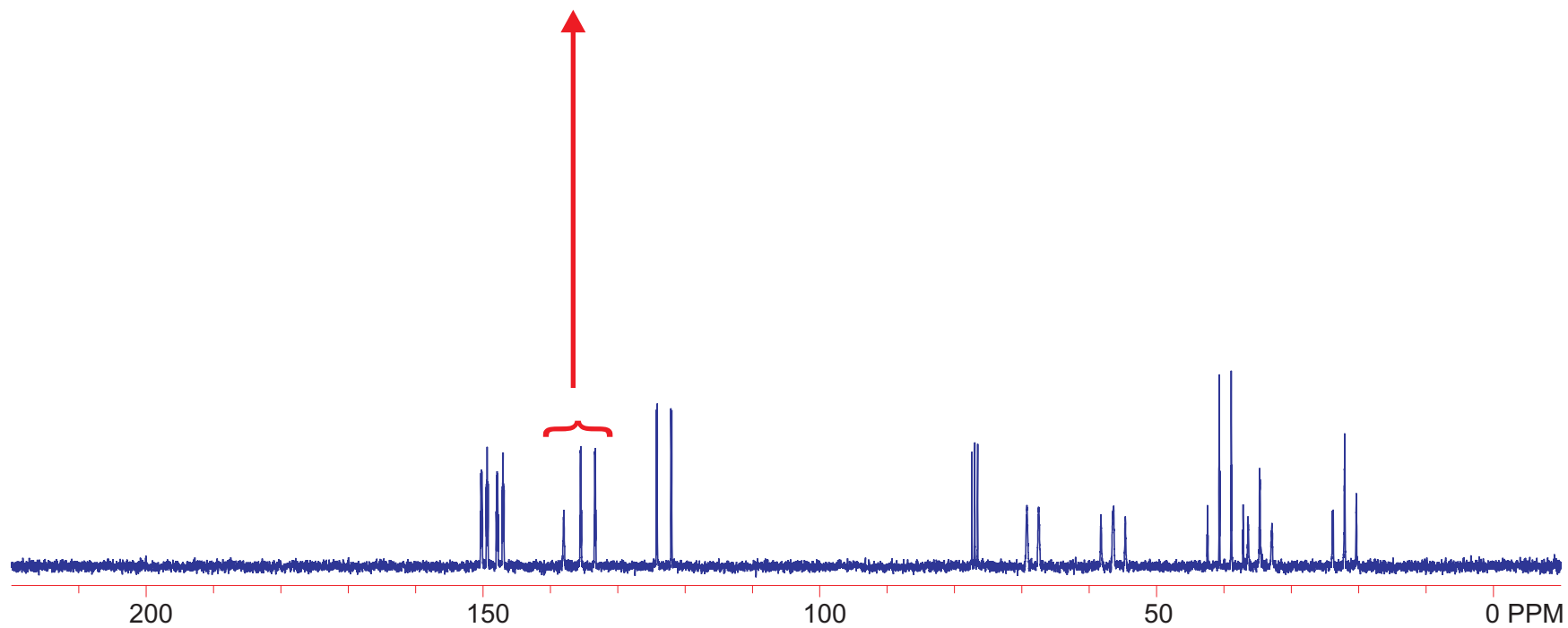
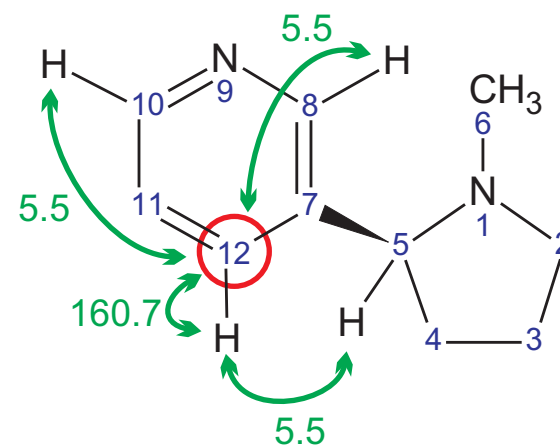
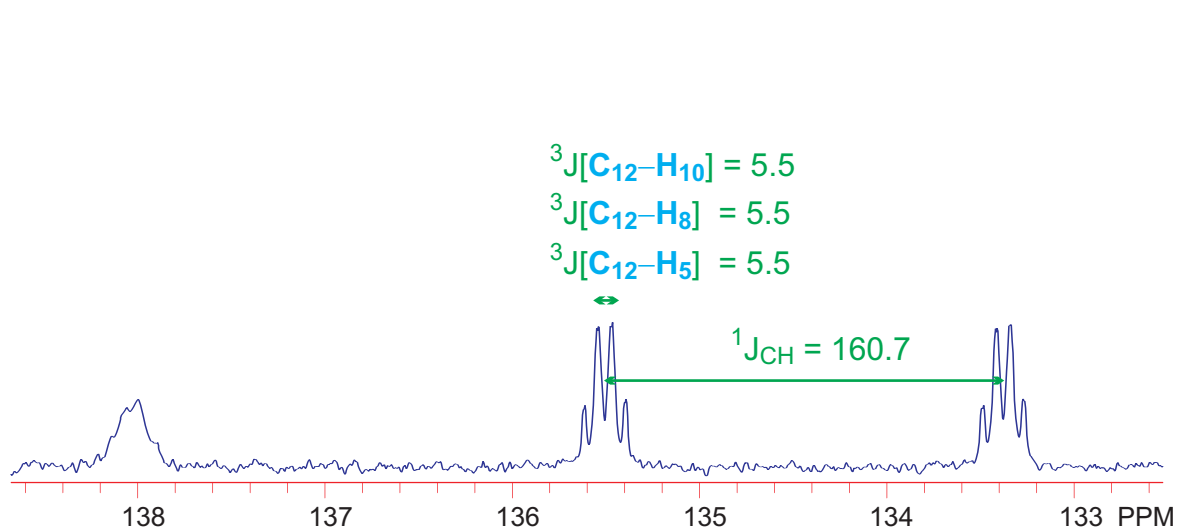


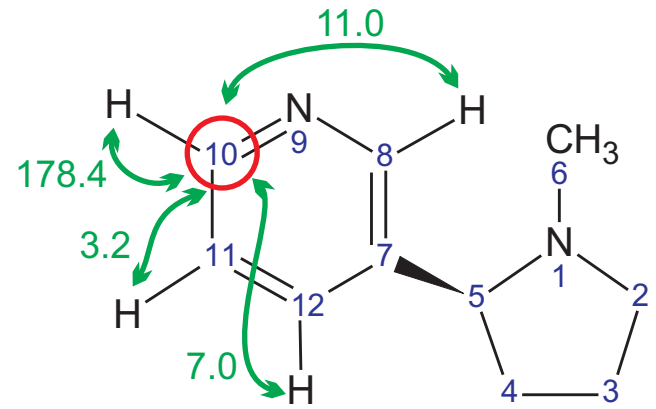
For extensive data on ^{13}C - ^1H couplings (as well as a significant amount of other useful NMR data), see Hans Reich's website at:

<http://www.chem.wisc.edu/areas/organic/index-chem.htm>

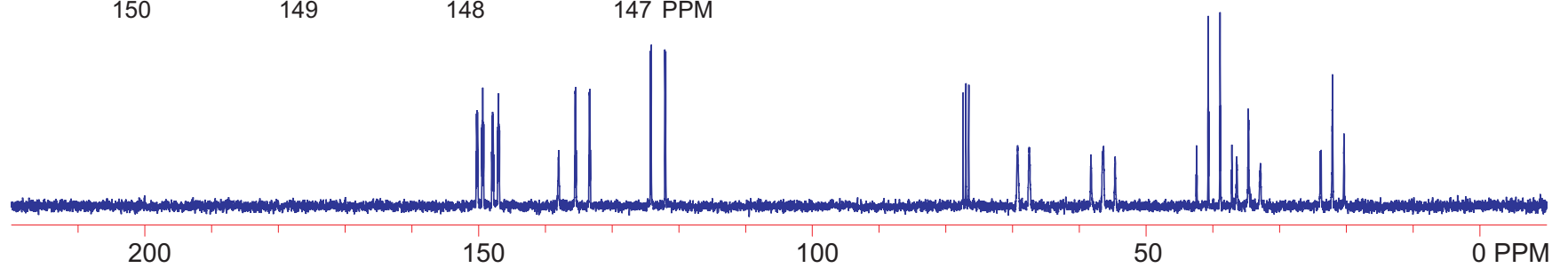
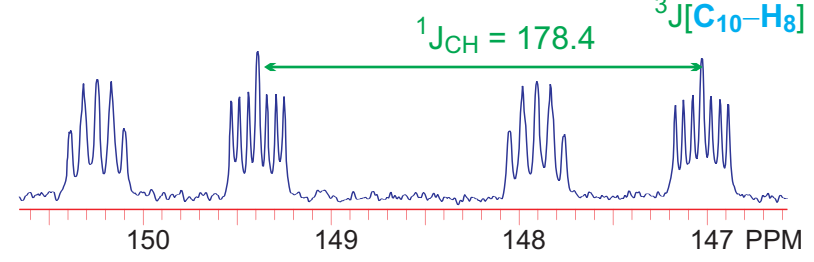
and the published literature.

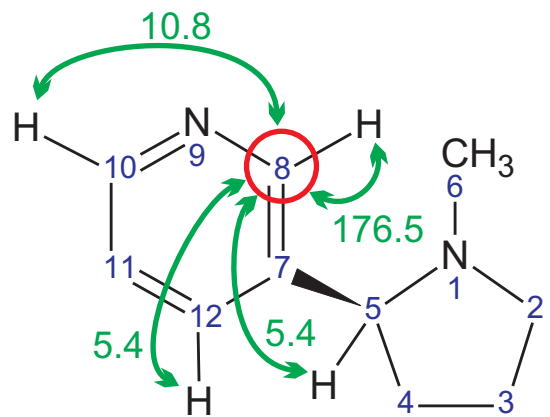






$^2J[\text{C}_{10}\text{-H}_{11}] = 3.2$
 $^3J[\text{C}_{10}\text{-H}_{12}] = 7.0$
 $^3J[\text{C}_{10}\text{-H}_8] = 11.0$





$^3J[\text{C}_8\text{-H}_5] = 5.4$
 $^3J[\text{C}_8\text{-H}_{12}] = 5.4$
 $^3J[\text{C}_8\text{-H}_{10}] = 10.8$ $^1J_{\text{CH}} = 176.5$

