

VNMR Plotting

Black controls spectrum appearance

Red controls placement on page

^1H from -1 to 9ppm

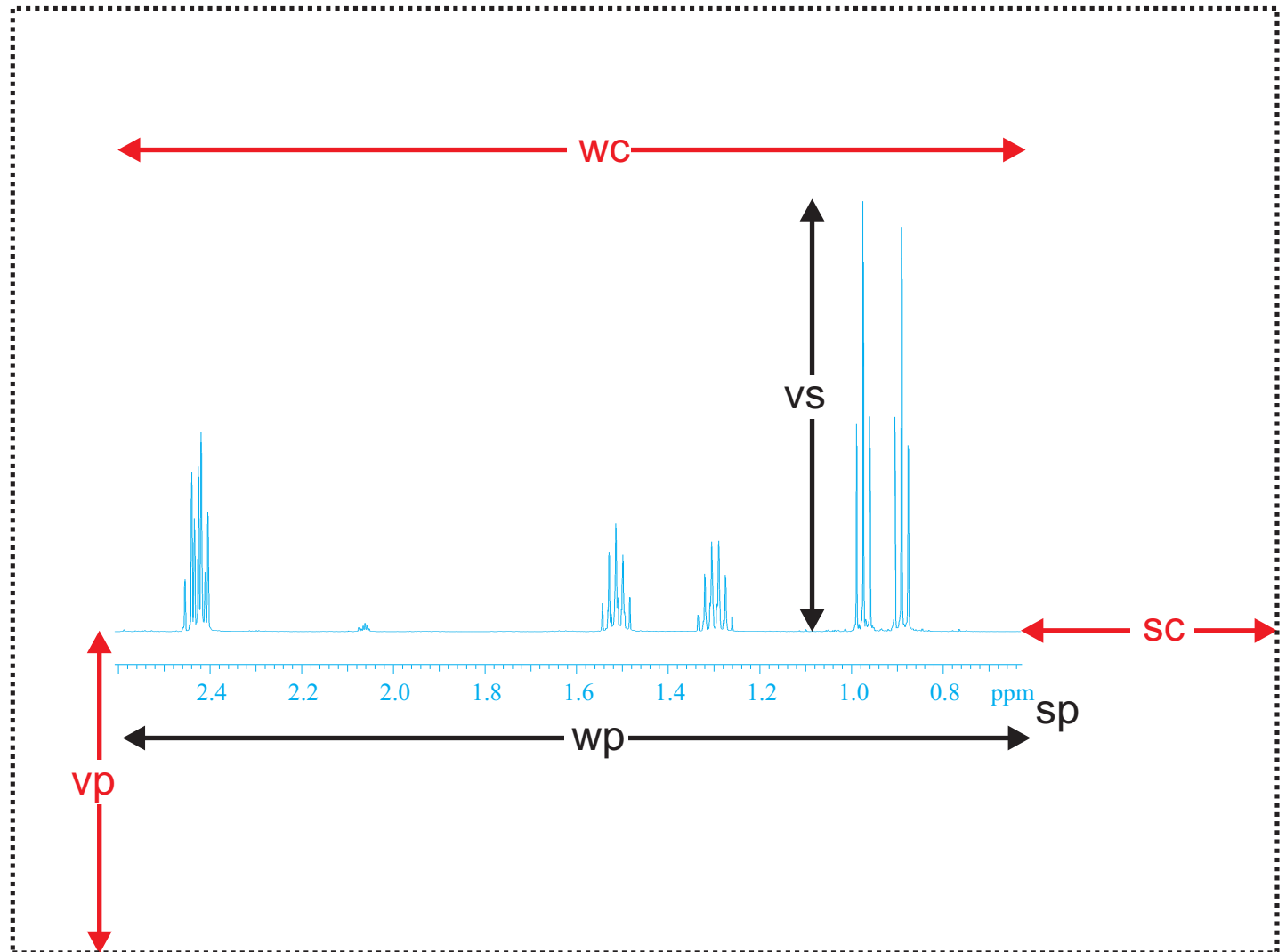
$\text{sp}=-1\text{p}$ $\text{wp}=10\text{p}$

$\text{sc}=20$ 20mm from right page edge

$\text{wc}=200$ width of plot is 200mm

vs and vp

often easier (more precise) to type than use mouse buttons

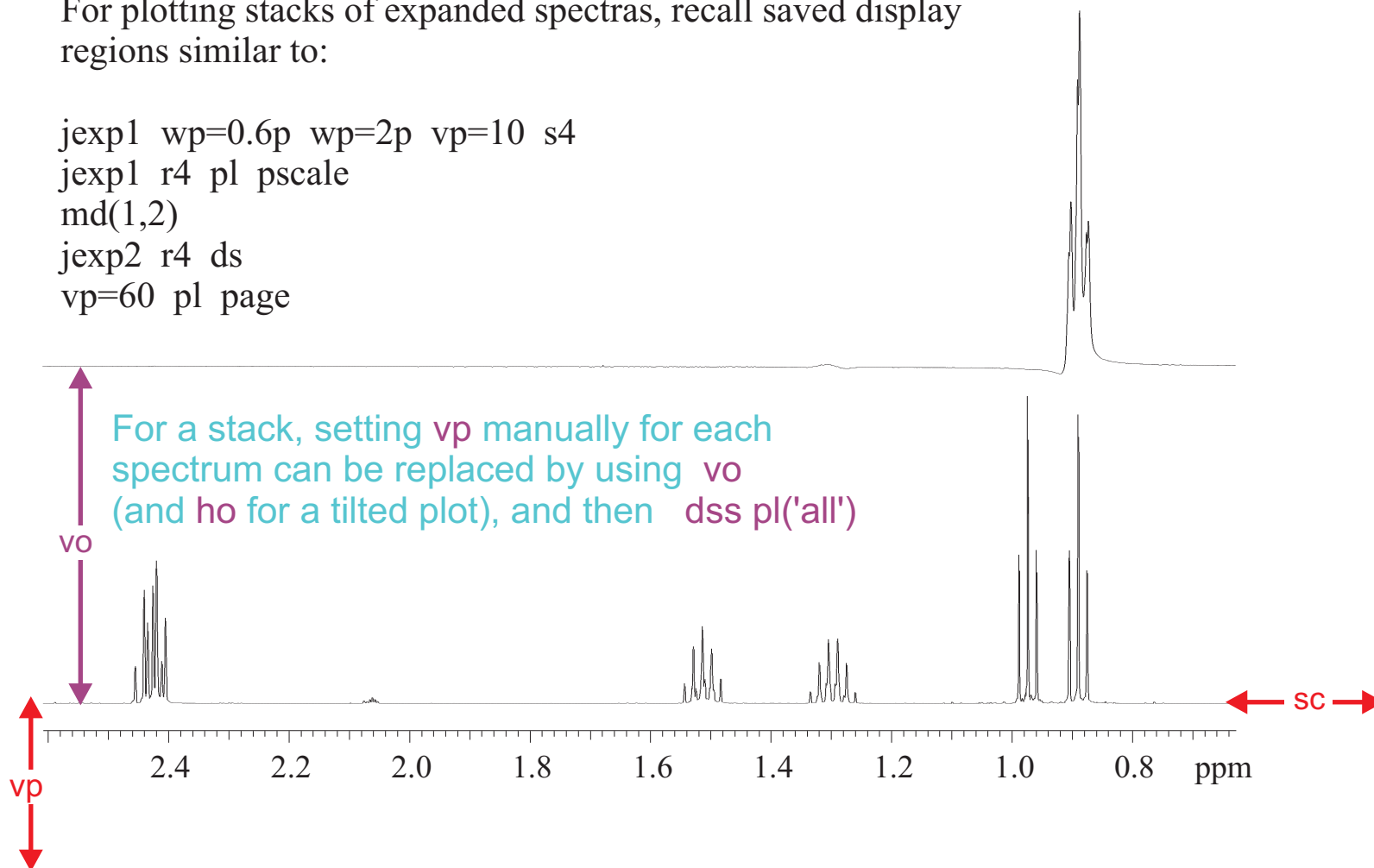


Stack Plots

```
jexp1 vp=10 pl pscale  
jexp2 vp=60 pl page
```

For plotting stacks of expanded spectras, recall saved display regions similar to:

```
jexp1 wp=0.6p wp=2p vp=10 s4  
jexp1 r4 pl pscale  
md(1,2)  
jexp2 r4 ds  
vp=60 pl page
```



Macros

Anything you type repetitively into VNMR can be placed into a macro; then simply type in the macro filename!

```
jexp1 sp=0.6p wp=2p vp=10 s4  
jexp1 r4 pl pscale  
md(1,2)  
jexp2 r4 ds  
vp=60 pl page
```

