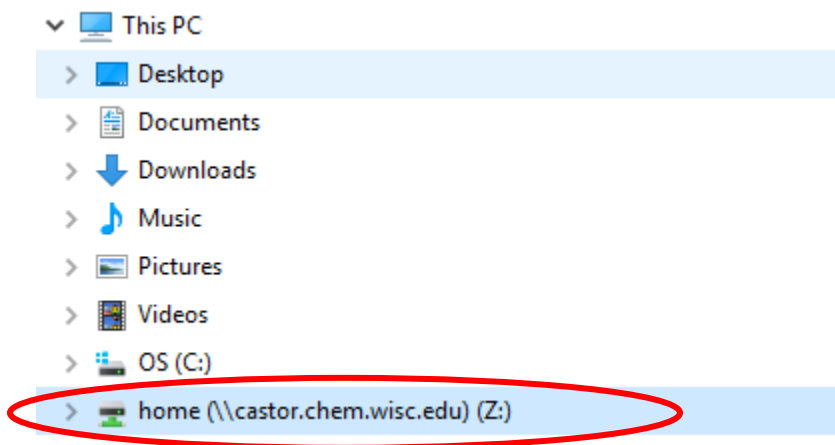


SQUID Data Access from Castor Server

20170628 lzhu

1. Save your data from spectrometer PC to Castor Server:

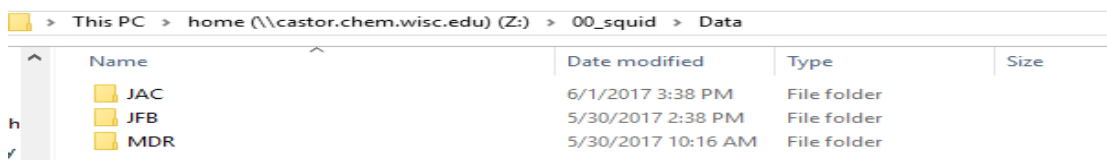
Castor server has been mounted in the hard drive of spectrometer PC. Open “File Explorer”, you will see **castor** network drive:



You will see “00_squid” folder in the top list of different user folders

Name	Date modified	Type
00_athena	1/18/2016 9:10 PM	File folder
00_Inova600_Hermes_old	5/18/2017 10:06 AM	File folder
00_mossbauer	6/14/2017 1:06 PM	File folder
00_squid	5/23/2017 2:52 PM	File folder
aaa_openspace	10/5/2015 10:55 AM	File folder
aamador	6/17/2012 5:30 PM	File folder
aandrea	8/27/2014 3:30 PM	File folder
abadalyan	5/15/2014 2:05 PM	File folder
abaghkhanian	12/17/2013 2:00 PM	File folder
abarres	8/27/2014 3:20 PM	File folder
abbasi2	9/11/2015 4:15 PM	File folder
abrazov	1/20/2014 10:44 AM	File folder

Then you get into the “Data” folder and can create your own folder name.



At last, you can copy your data files into your own folder. It is better to have sub-folders under your own folder so you can get your data files organized.

2. Download your data from Castor Server

You will have to download the data to your computer to process it, but this is a good habit to have.

To connect to castor, your computer must be on the Chemistry network (on a wire; wireless is not sufficient), or running WiscVPN.

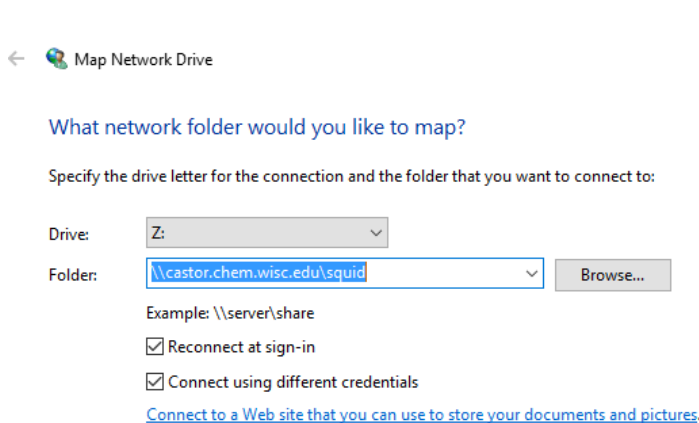
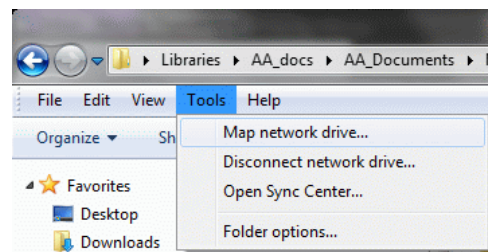
If you are not on the Chemistry network or using ChemVPN or WiscVPN, castor will not allow a connection.

You can mount Castor server directly on your PC:

A. Windows Mount:

1. open **Windows Explorer** and click on Computer
2. **Tools** → **Map Network Drive**
3. NMR data:
 - i) enter: `\\castor.chem.wisc.edu\squid`
No more “https” or “~” here.
 - ii) check: **Connect using different credentials**
 - iii) use your Chemistry ID **username** and **password** to connect
(Currently the ID **username** is CHM_DEPT**username**): e.g., the user cgfry will use CHM_DEPT\cgfry

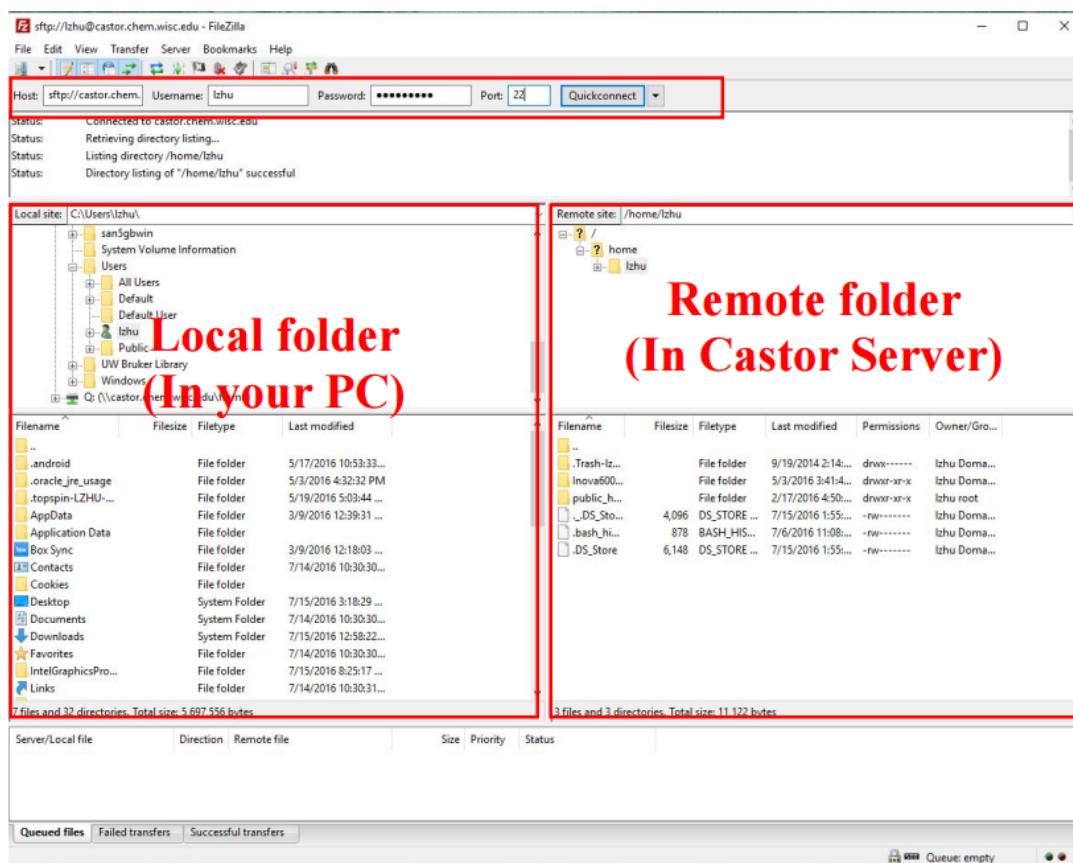
Your SQUID data will be at **/home/00_squid/Data/**



B. Castor can also be accessed using secure- (password encrypted) FTP, sFTP. **FileZilla, WinSCP** and SecureFX are good sFTP programs.

1) Here is the example of using FileZilla (easy and quick!):

FileZilla official website: <https://filezilla-project.org/>



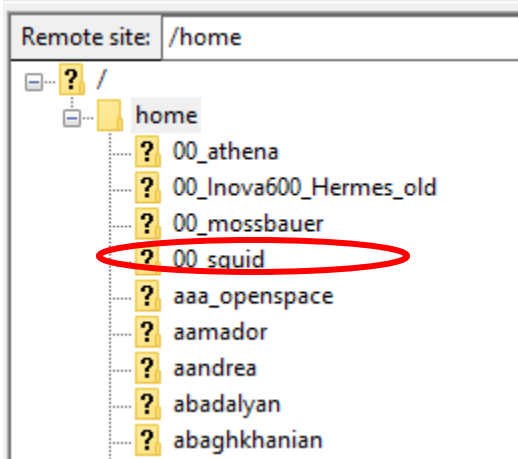
How to Connect (See the top red box area):

Type "castor.chem.wisc.edu" in **Host**; Use your Chemistry ID **username** and **password** to connect; Type "22" in **Port**.

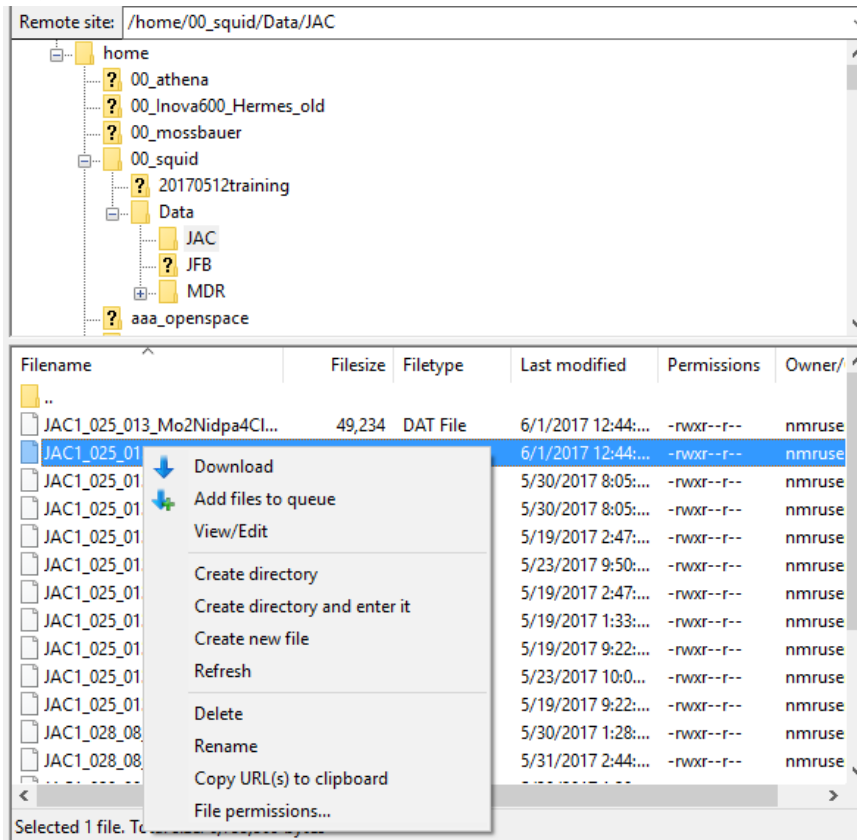
Click "**home**" in the remote folder



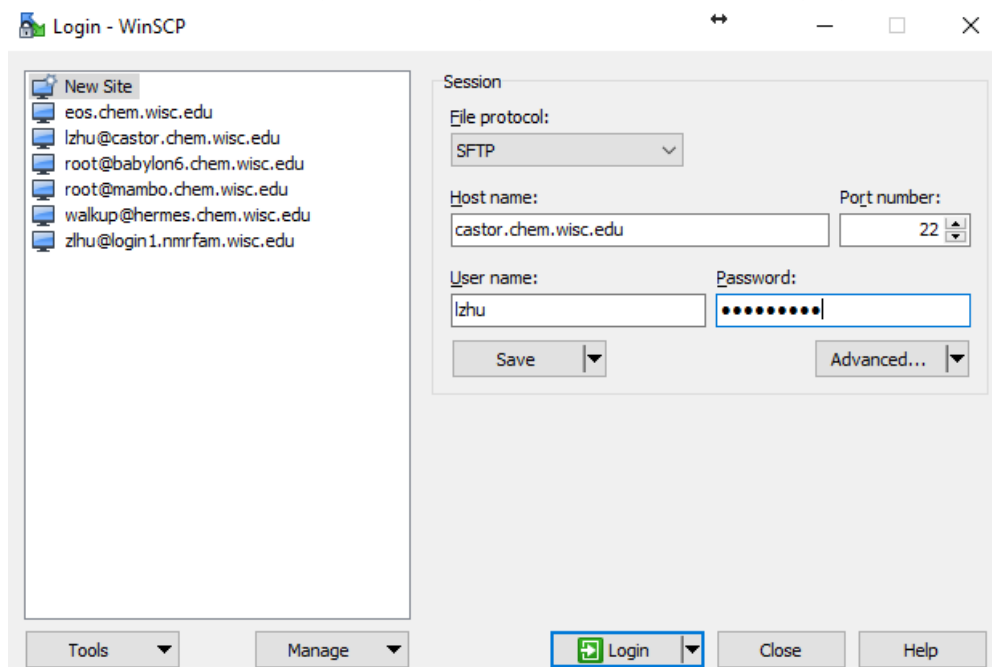
Find the “00_squid” folder and download your data files.




Right click to choose “Download”

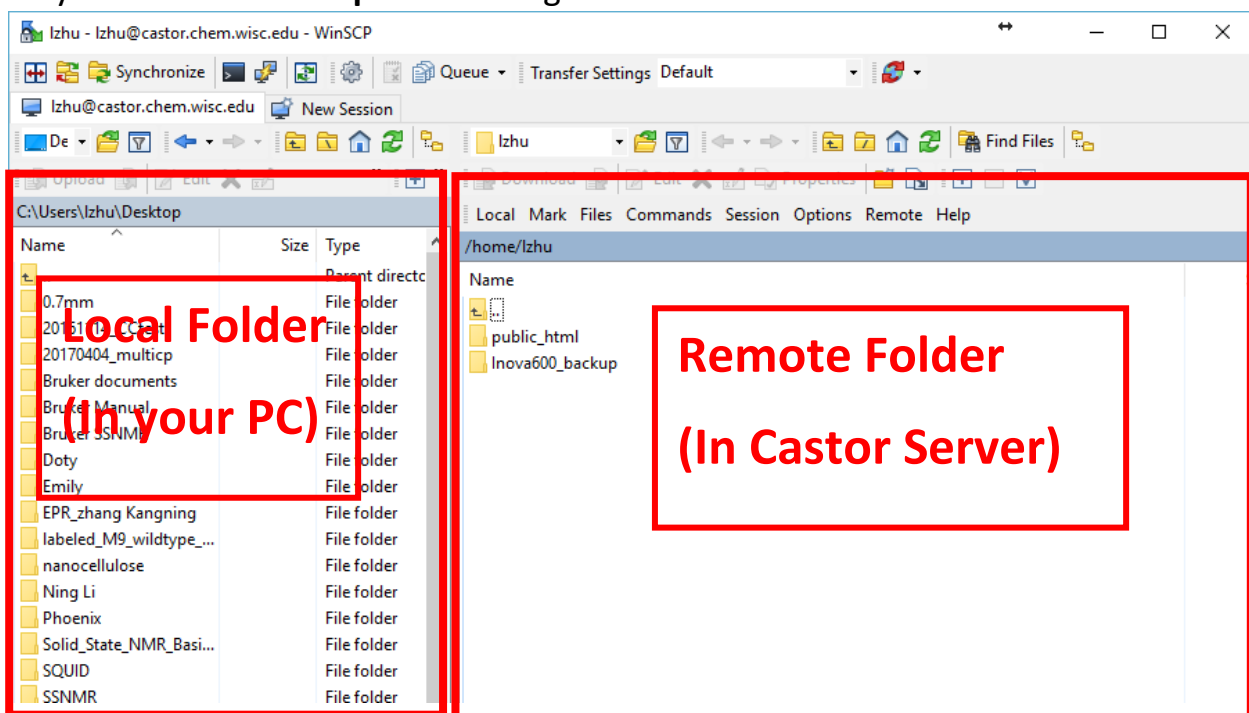


2) Here is another example: How to use WinSCP to download
(Official Website: <https://winscp.net/eng/download.php>):



Type “castor.chem.wisc.edu” in **Host name**; Use your Chemistry ID **username** and **password** to connect; Type “22” in **Port**.

Click “**home**” in the remote part to get into “**home folder**” in Caster server;
Or you can use  “**Up Arrow**” to get into “**home folder**”



Then you will be able to find the “00_squid” folder to download your data files.

