



## Official website:

[nmr.bsd.uchicago.edu](http://nmr.bsd.uchicago.edu)

- equipment, rates, contacts, etc.

## Unofficial website:

[homepage.mac.com/jkurutz](http://homepage.mac.com/jkurutz)

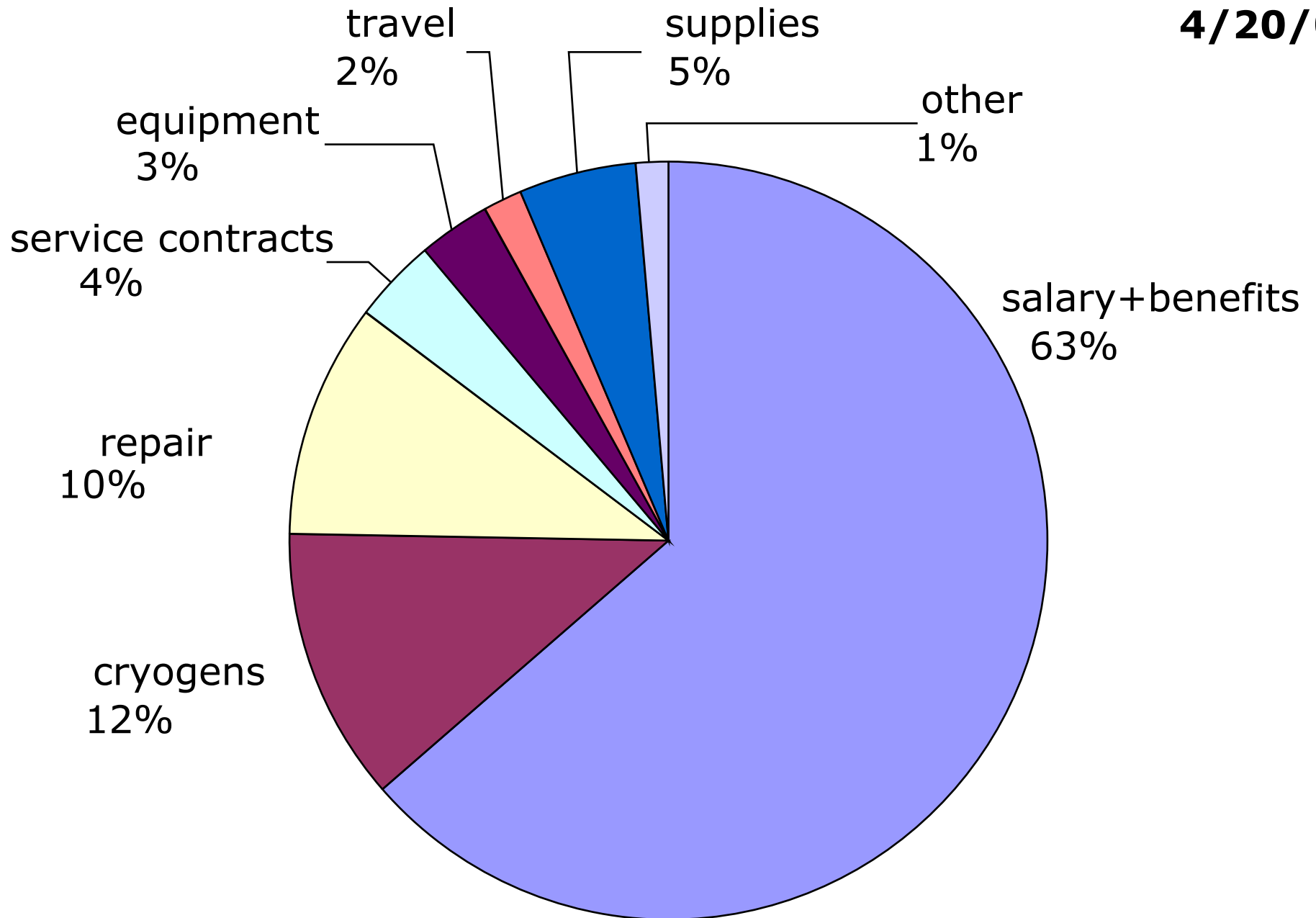
- facility photos & scale diagrams/layouts
- photos of installed cold probe
- user guides ("Gray Boxes")
- **results of this survey**

# Questions

- Facility Type/Operational model
  - public or private institution?
  - department? interdepartment organization?
  - part of a broader core facility?
  - do you offer service? for a fee?
- Expenses (*Including your own salary + benefits*)
  - what fraction goes to personnel
  - what fraction goes to cryogenics? repairs? equipment?...
- Revenue
  - what fraction comes from user fees?
  - from institution? department?
  - from PI grants? other?
- Overhead - how much does your institution charge?

# Average Expenses

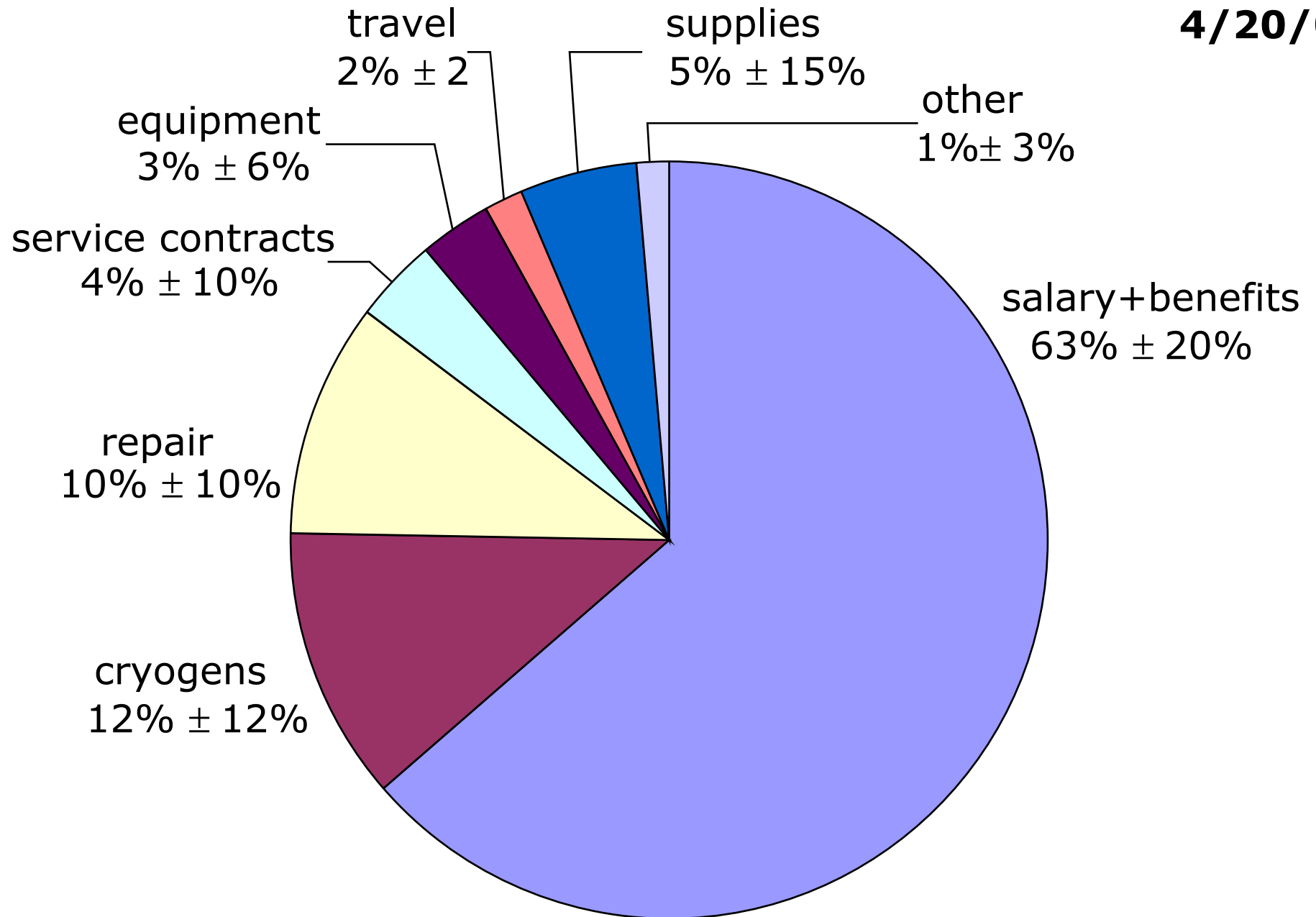
**N=45**  
**4/20/06**



# Average Expenses

( $\pm$  standard deviations)

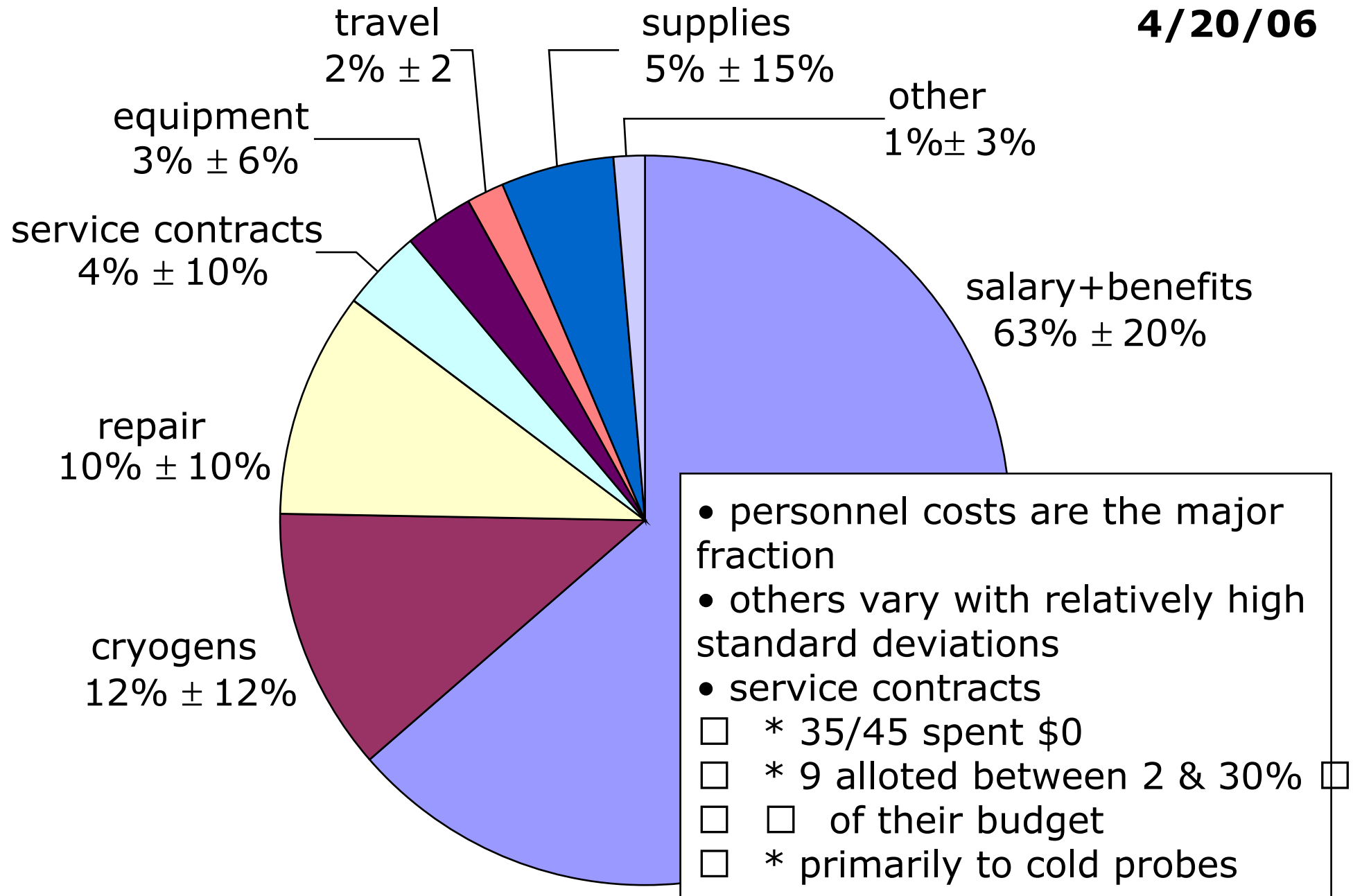
**N=45**  
**4/20/06**



# Average Expenses

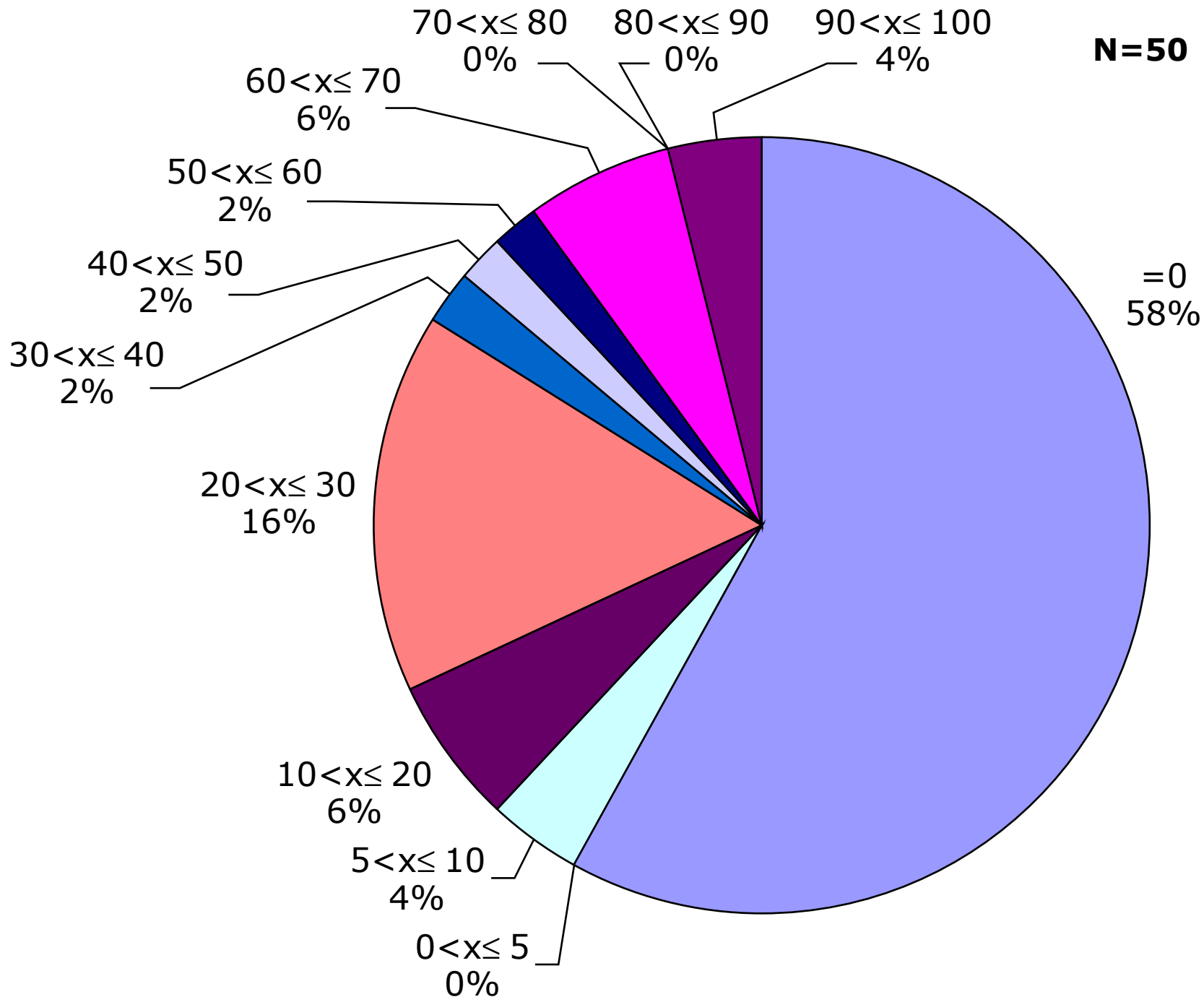
( $\pm$  standard deviations)

**N=45**  
**4/20/06**



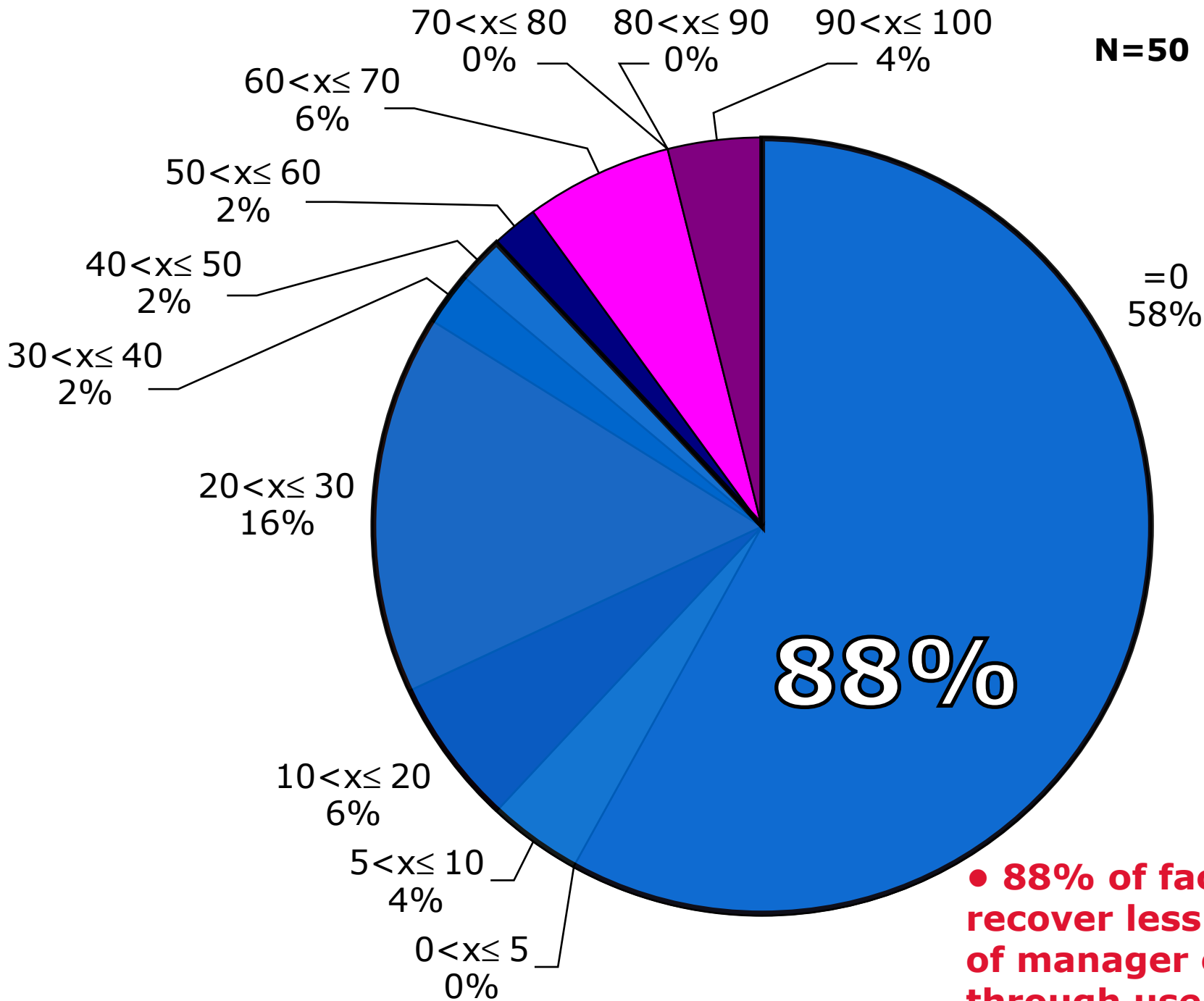
# %Manager Salary covered by recharge

**N=50 4/20/06**



# %Manager Salary covered by recharge

N=50 4/20/06

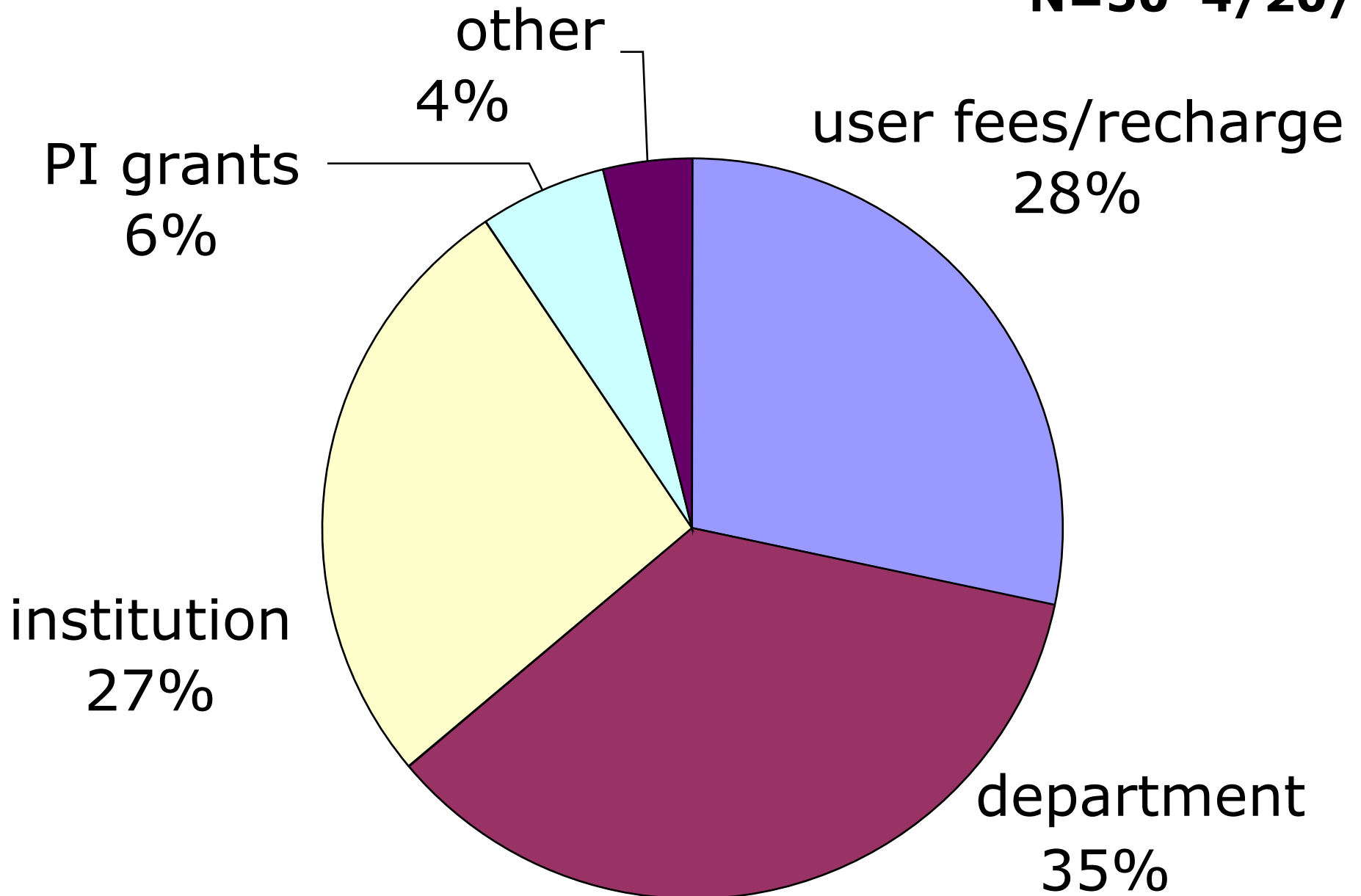


● 88% of facilities recover less than 50% of manager costs through user fees



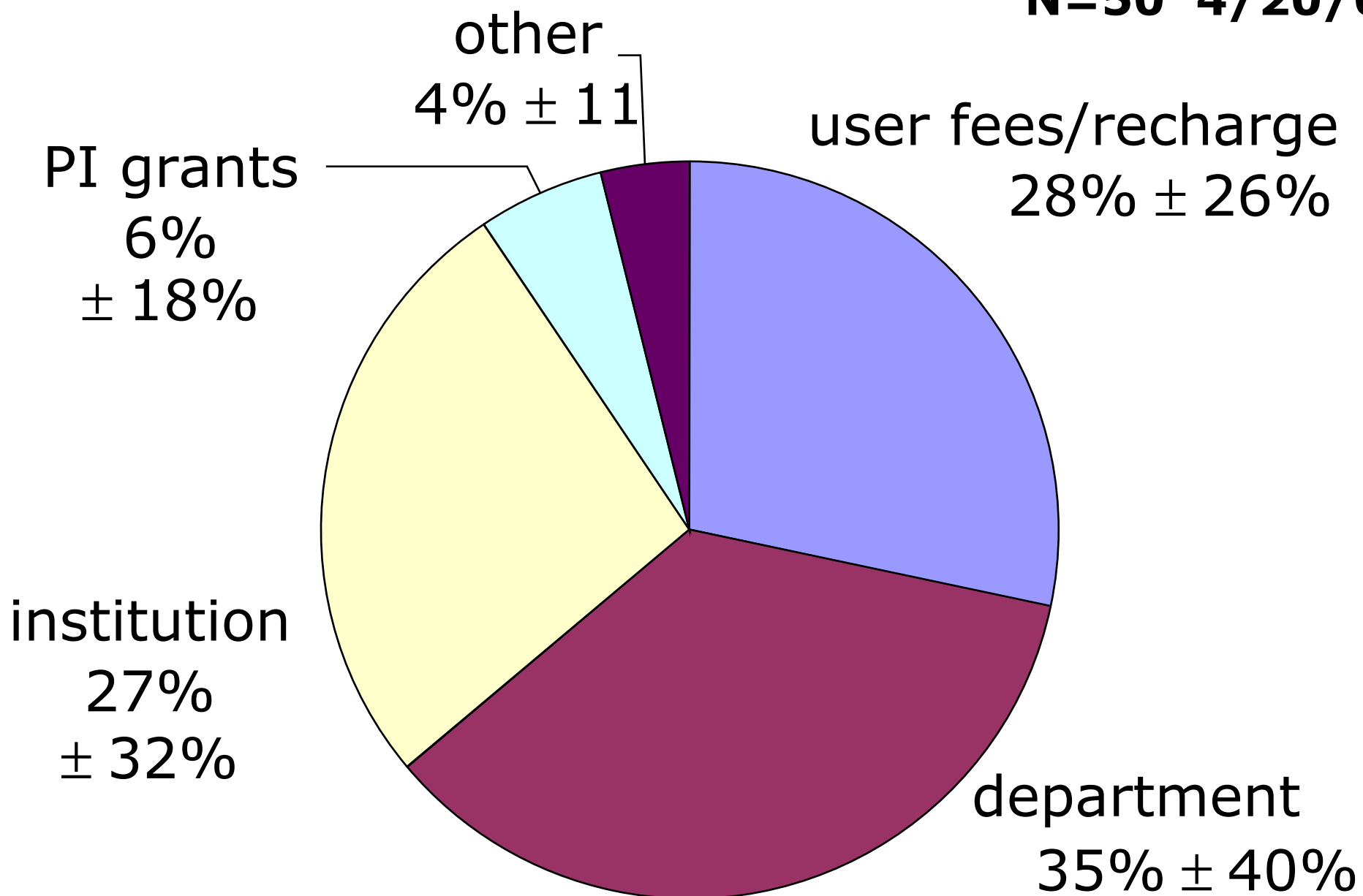
# Average Revenues

**N=50 4/20/06**



# Average Revenues (± standard deviations)

**N=50 4/20/06**



# Average Revenue

(± standard deviation)

N=50 4/20/06

other

4%

user fees/recharge

28% ± 26%

PI grants

6%

**AVERAGES**

**ARE**

**USELESS!**

institution

27%

± 32%

department

35% ± 40%

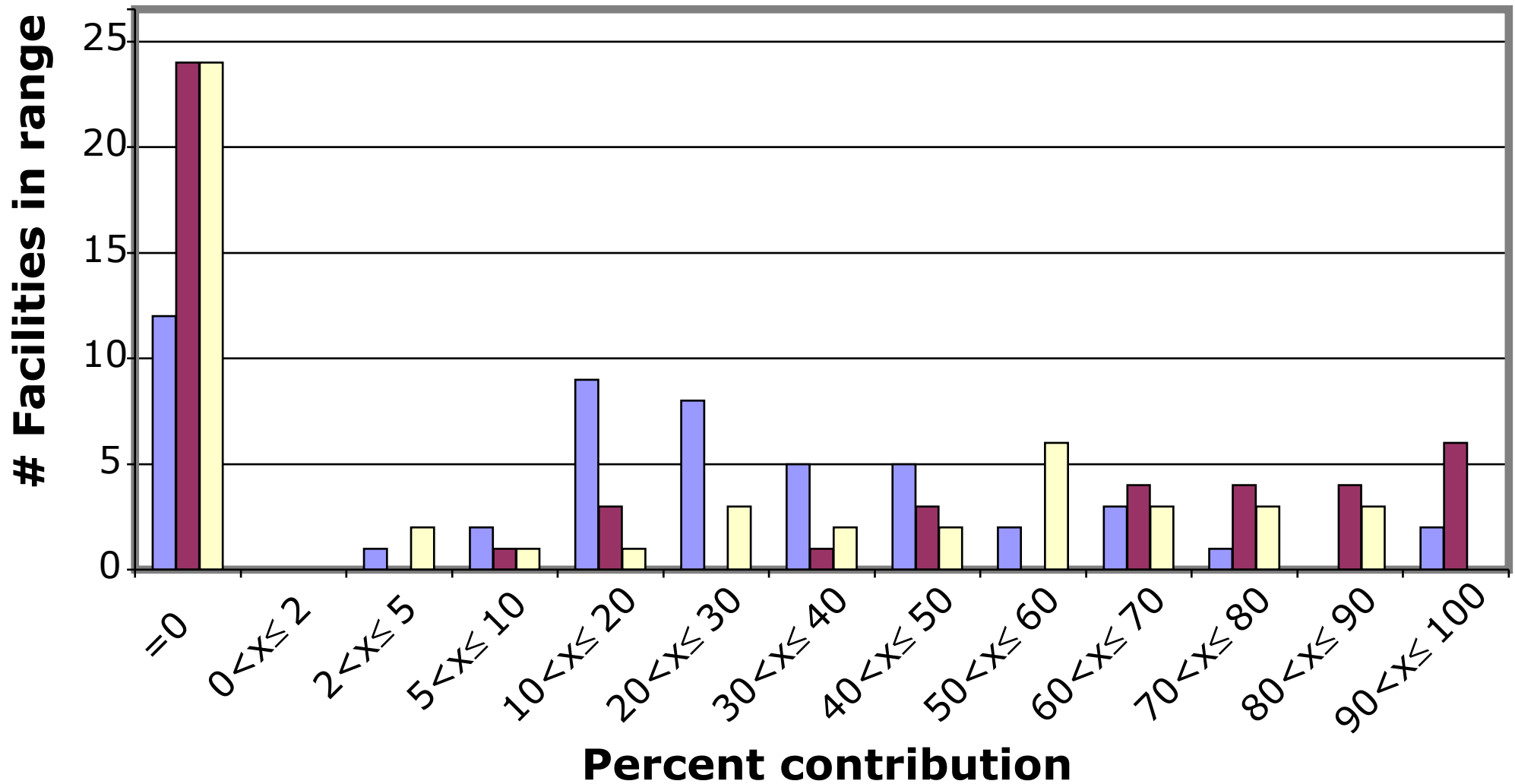
# Major Funding Sources

fees

department

institution

**N=50**  
**4/20/06**



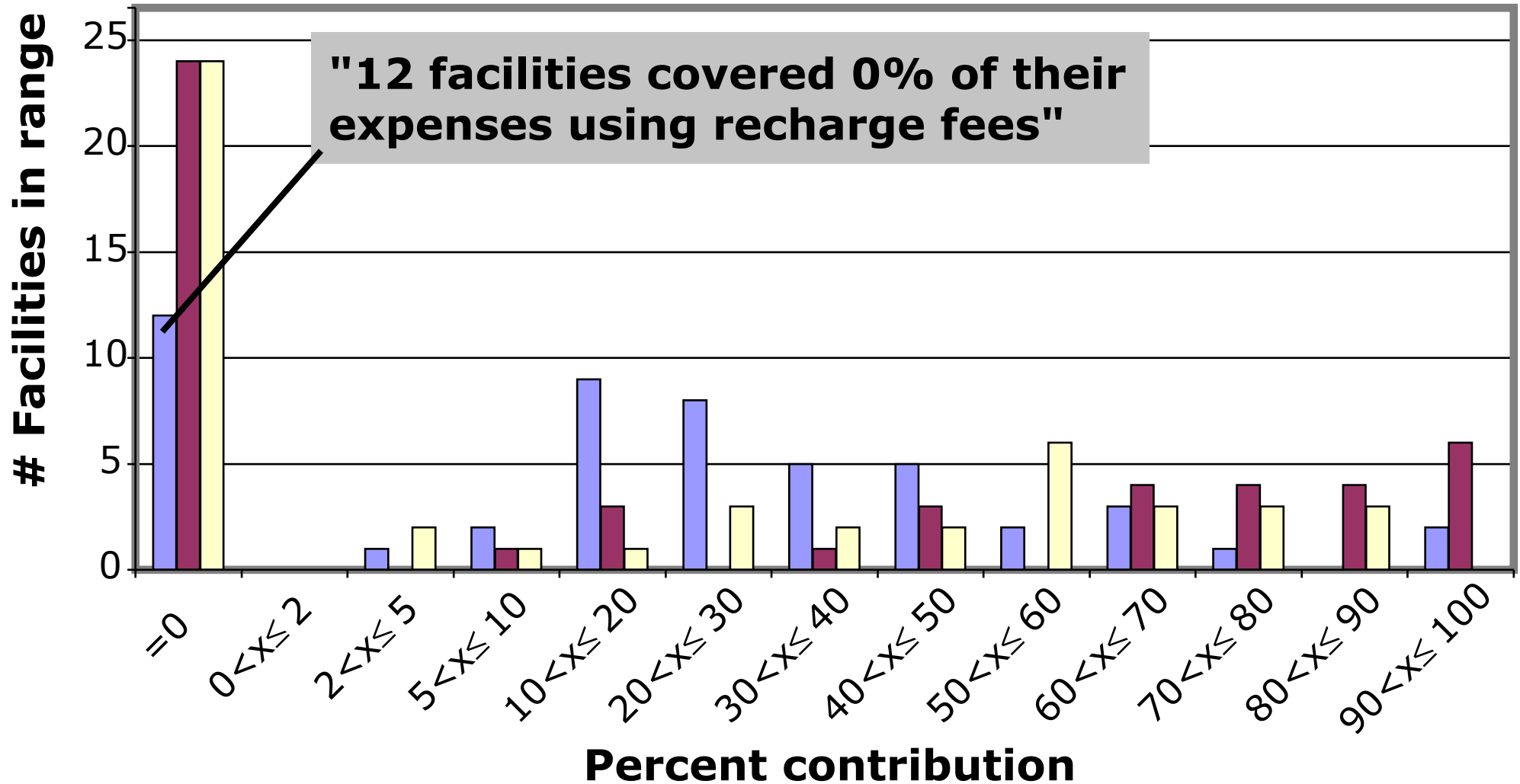
# Major Funding Sources

fees

department

institution

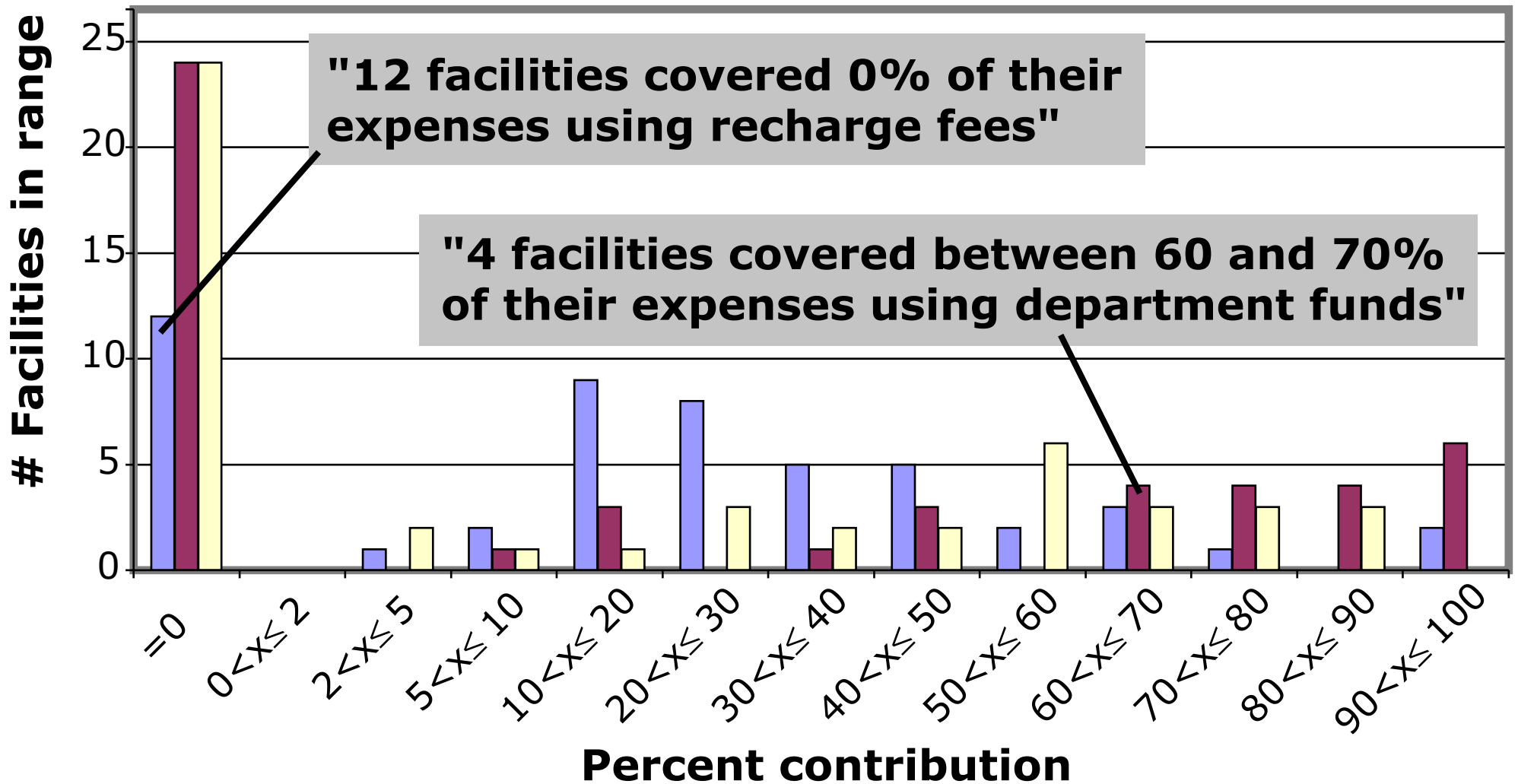
N=50  
4/20/06



# Major Funding Sources

■ fees      ■ department      ■ institution

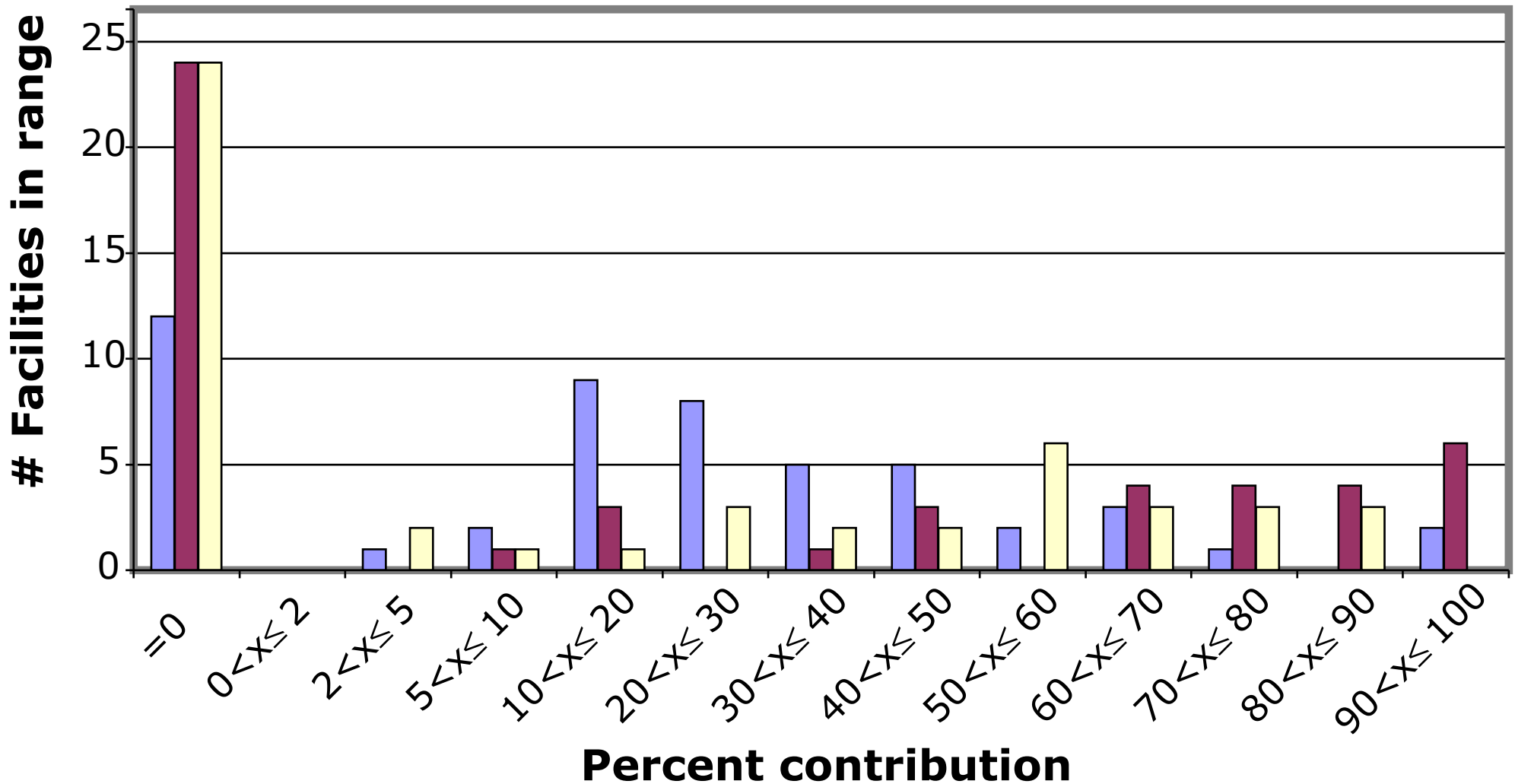
N=50  
4/20/06



# Major Funding Sources

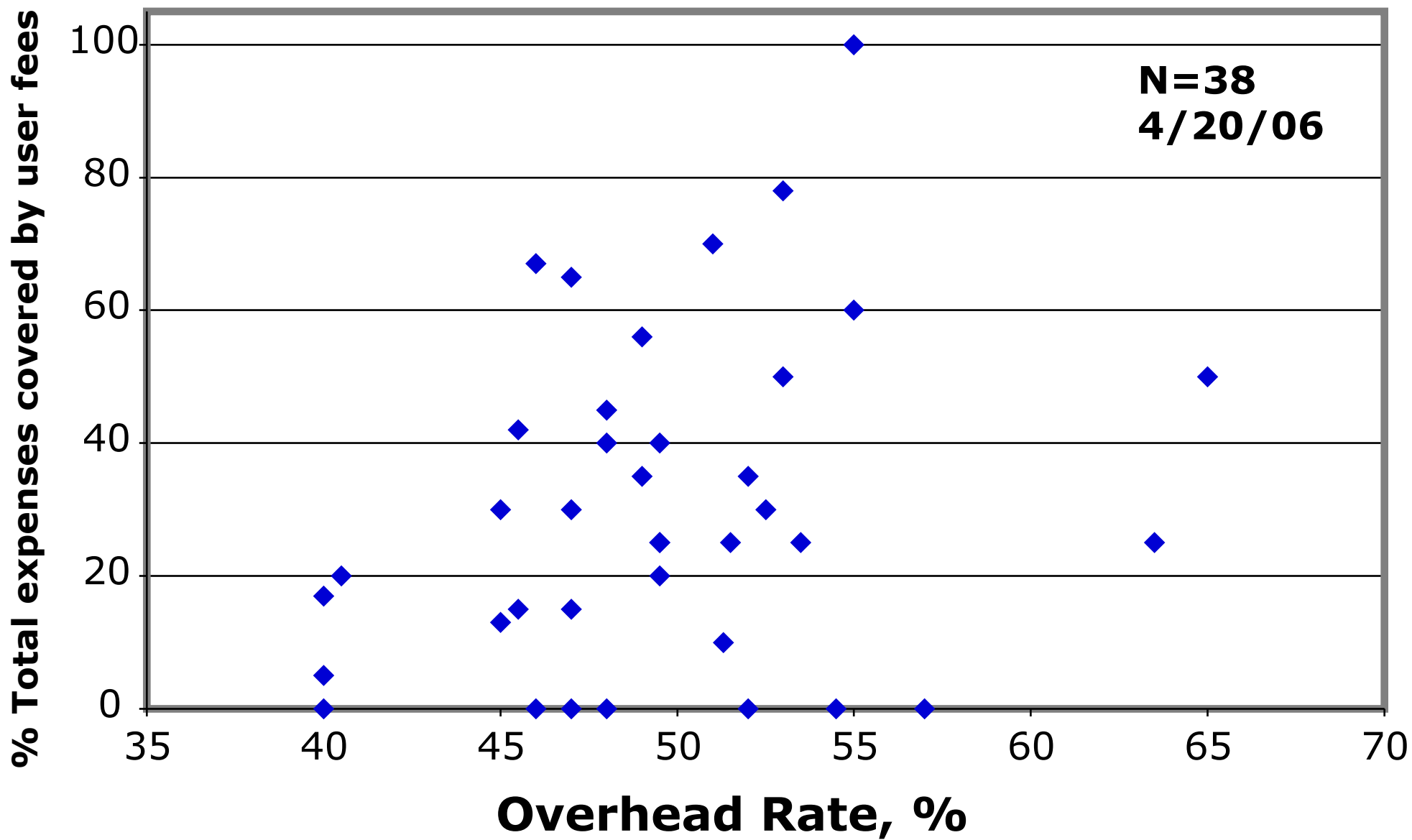
■ fees      ■ department      ■ institution

**N=50**  
**4/20/06**



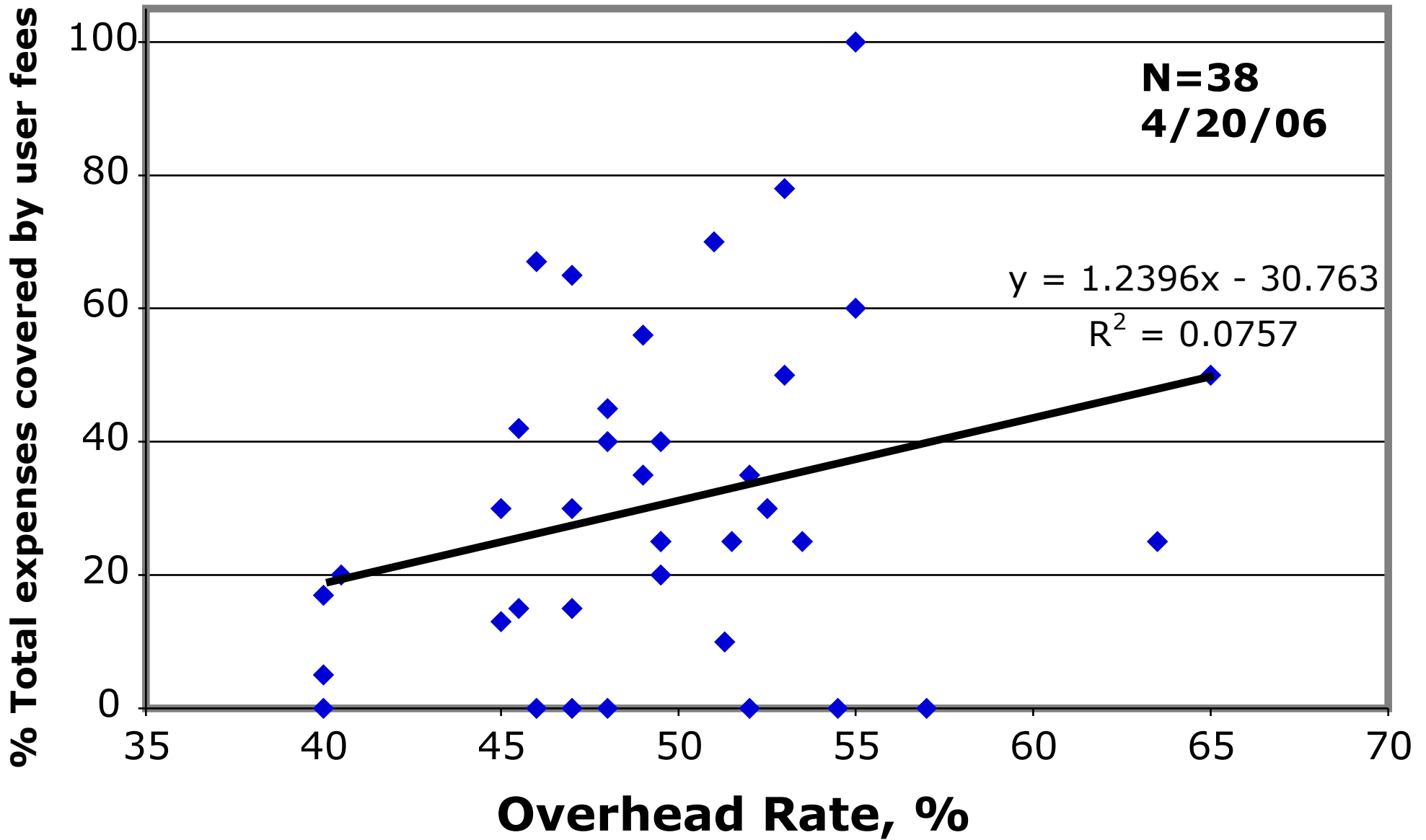
- Few are funded from one lone source
- Virtually all are funded by a combination of two of the three major funding sources

# %Reliance on User Fees vs. Grant Overhead Rate



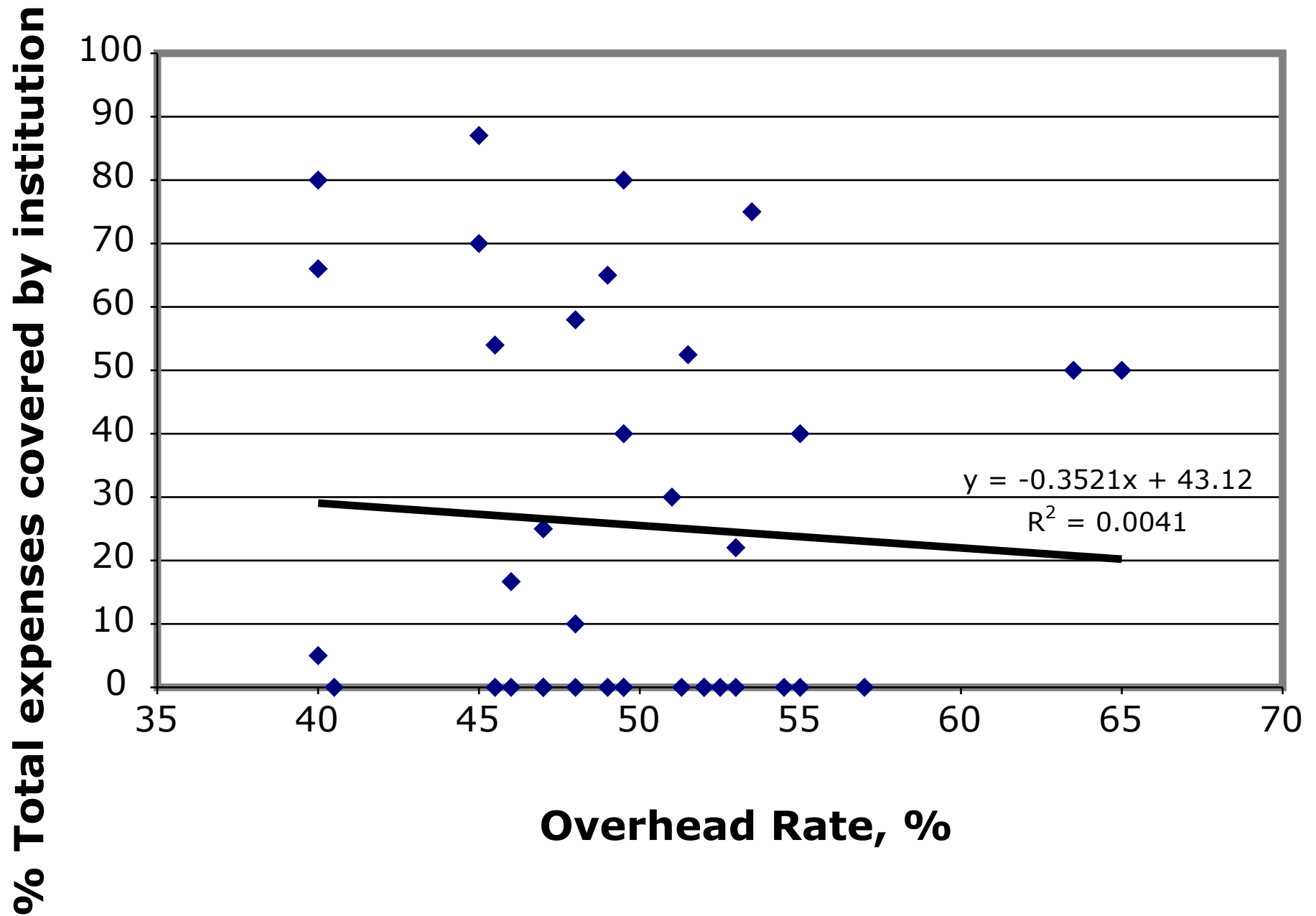


# %Reliance on User Fees vs. Grant Overhead Rate



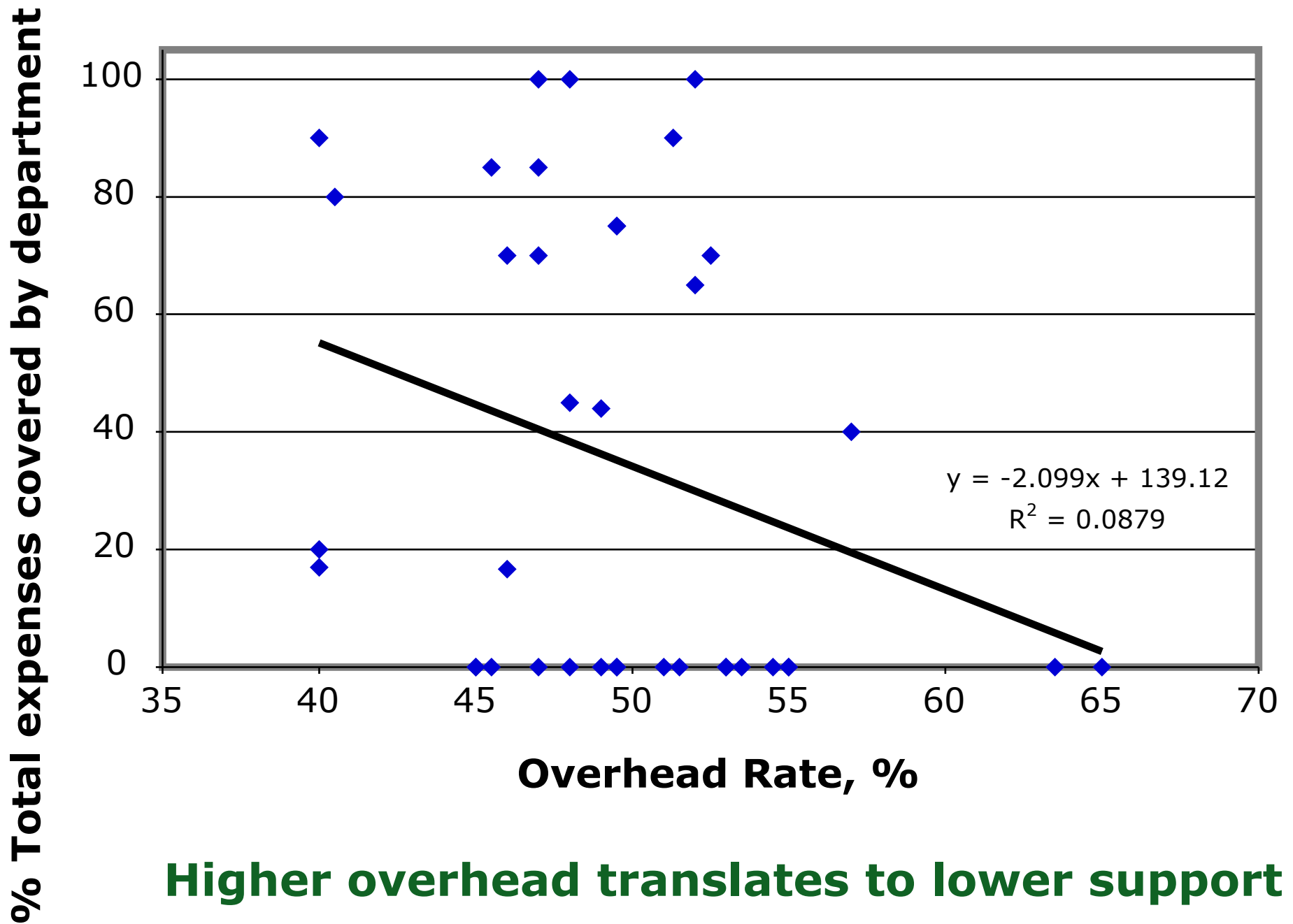
**Some places are just more expensive than others**

# University Support vs. Grant Overhead



**Higher overhead translates to lower support**

# Department Support vs. Grant Overhead



**Higher overhead translates to lower support**

# Action

- Average university overhead in 2005 (*Chron Hi Ed, Aug. 5 2005*)
  - "top" 100 research institutions:  51.8%
  - public universities:     49.1%
  - private universities:     56.7%
  -
- Small dependence on fees and below-average overhead?
  - sit tight & tell faculty how lucky they are
- High fees and low overhead (or vice versa)?
  - accept the tradeoff
- High dependence on fees & high overhead?
  - determine how much department is funded from
    - from overhead charges
    - seek equitable funding from whichever entity (univ. or   department) benefits from overhead revenue
- Charge for service, including "collaboration"
  - Interpretation is more valuable than data collection,
    - so charge (more) for it